

**CITY OF DELRAY BEACH
POLICE DEPARTMENT
2015 ANNUAL REPORT**

TABLE OF CONTENTS

Message from Chief Goldman	Page 3
Initiatives and Community Programs	Page 4
Office of the Chief	Page 5
Office of the Chief Organizational Chart	Page 6
Community Affairs/Public Information Office	Page 6
Administrative Unit	Page 7
Internal Affairs Section	Page 7
Director of Emergency Management	Page 7
Sworn Members of Command Staff	Page 8
Field Operations Bureau	Page 9
Community Patrol Division	Page 9 — 11
Problem Oriented Policing (P.O.P. Unit)	Page 12
SWAT Team	Page 13
Investigative Division	Page 13
Property Unit	Page 13 — 14
White Collar Crime Unit	Page 14
Persons Unit	Page 14
Vice, Intelligence and Narcotics Unit	Page 15
Criminal Intelligence Unit	Page 16
Crime Scene Unit	Page 16
Evidence Section	Page 17
Hostage Negotiations Team	Page 17
Special Services Bureau	Page 18
Accreditation Unit	Page 18
Training Unit	Page 19
Information Technology Unit	Page 19
Community Response Division	Page 19
Fleet	Page 20
Community Service Officers	Page 20
Traffic Unit	Page 21
Clean and Safe Unit	Page 21
Atlantic High School Criminal Justice Academy	Page 22
Dive Team	Page 22
Support Services Division	Page 23
Communications Section	Page 23
Police Information Services	Page 23 — 24
Volunteer Program	Page 24
Approved Budget 2014-2015	Page 25
Department Conduct Investigations	Page 26
Part One Crime Comparison	Page 27
Department Awards and Community Awards Recipients	Page 28—29



MESSAGE FROM YOUR CHIEF OF POLICE

Dear Residents, Visitors, Business Owners and Community Partners:

I am pleased and proud to present the 2015 Delray Beach Police Department Annual Report. Leading this amazing organization as your Chief of Police was very rewarding. It is without a doubt that the city of Delray Beach is a vibrant, diverse and internationally recognized city. The police department is proudly represented by the dedicated men and women, both sworn and civilian, who work tirelessly to ensure your safety and well-being. We are complemented by approximately 300 dedicated and loyal volunteers. Your police department works along with our community to ensure public safety and to make Delray Beach a safer place to live, work and play. We continue to be recognized as one of the premier law enforcement agencies in the nation. The Delray Beach Police Department constantly analyzes our performance to ensure we are providing the best service to our community. We will continue to challenge our employees to provide the excellent service you deserve.

This year was our first full year of deployment into a policing strategy that allowed our employees to better engage our community and become more familiar with what occurs in the neighborhoods. We will continue to be guided by the principles of intelligence led-policing and will remain committed to proactively addressing crime issues. These strategies led to a reduction in crime for 2015. Our policing strategy is based on accountability for our employees for geographical locations. Our hope is that you will meet our employees before you ever have to dial 911. Meeting and interacting with your police department before a crisis is crucial to ensuring public safety and enhancing the quality of life for residents and visitors to our city. Community partnerships will continue to be forged and renewed. We remain passionately committed to our community policing and problem solving philosophies and understand the importance of being fully engaged with the community we serve.

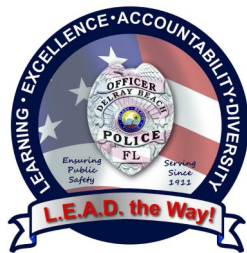
We understand that people are our number one resource. We will continue to recruit and retain the best employees to ensure we are providing excellent service. Internally, we will provide the training needed to increase the skill sets of our employees and prepare others to lead this great organization into the future. Succession planning is a key ingredient to a healthy organization.

The motto of your police department is "L.E.A.D. the Way!". We believe your police department should lead the way in our community and lead the way for other police departments to follow. Our values of Learning, Excellence, Accountability and Diversity will continue to be part of our daily interactions, both internally and externally. While this report is not all-inclusive of what we accomplished, it reflects on the hard work, outstanding accomplishments and professional services provided by the men and women of this agency. Should you have any questions, please feel free to contact me or any other member of the department. Again, thank you for allowing me to be your Chief of Police.

Stay safe and continue to #LEADtheWay

Jeffrey S. Goldman
Chief Of Police





INITIATIVES AND COMMUNITY PROGRAMS



- ◇ The department continued with its intelligence-led policing philosophy to reduce crime in the community.
- ◇ Officers continued to attend homeowner association meetings and civic group meetings to address concerns of the community and offer crime prevention tips for their neighborhoods.
- ◇ Community Patrol officers effected over 2,458 arrests and issued 12,362 traffic citations.
- ◇ The Investigative Division participated in several programs to assist with community initiatives and create partnerships, such as the Juvenile Arrest and Monitoring Program (J.A.M.), School Liaison Program, Clergy Group and the Gang Officer Liaison Deputy through PBSO Violent Crimes Task Force.
- ◇ Members of the Police Department participated in the Thanksgiving Feast for the Out of School Program, Annual Holiday Toy Drive, Law Enforcement Memorial Day, Curb Appeal, baseball and basketball programs.
- ◇ Through a partnership with Human Powered Delray and a local bike shop, the Delray Beach Police Department was able to donate reconditioned bicycles to students attending the Toussaint L'Overture High School.
- ◇ The first annual National Night Out event was organized and hosted in August at the Delray Beach Tennis Center. More than 3,000 people were in attendance, surpassing organizers' expectations.
- ◇ Uniform Crime Reporting (U.C.R.) reviewed over 25,000 incident reports to ensure compliance with UCR standards.
- ◇ The Donuts with Delray PD event was implemented on a monthly basis and hosted at various locations throughout the city.
- ◇ The Bike Registration and Residential Security checks was launched on the city's website.

OFFICE OF THE CHIEF

The Office of the Chief is responsible for overseeing the functions of the Public Information Office/Community Affairs, the Administrative Unit, Internal Affairs Section, Field Operations and Special Services Bureaus. Chief of Police Jeffrey Goldman began his career with the Delray Beach Police Department in 1989. He was promoted to sergeant in 2000, lieutenant in 2005, captain in 2007, assistant chief in 2011, and became the 15th Delray Beach Chief of Police in September 2014. Chief Goldman earned his Master's of Science Degree in Criminal Justice from Florida International University. He earned his Bachelor of Science Degree in Criminal Justice Administration from Columbia Southern University. Chief Goldman is a graduate of the FBI National Academy (241st Session) and the Senior Management Institute for Police, Police Executive Research Forum (36th Session).



Chief Jeffrey S. Goldman and Executive Assistant Beatrice Screciu

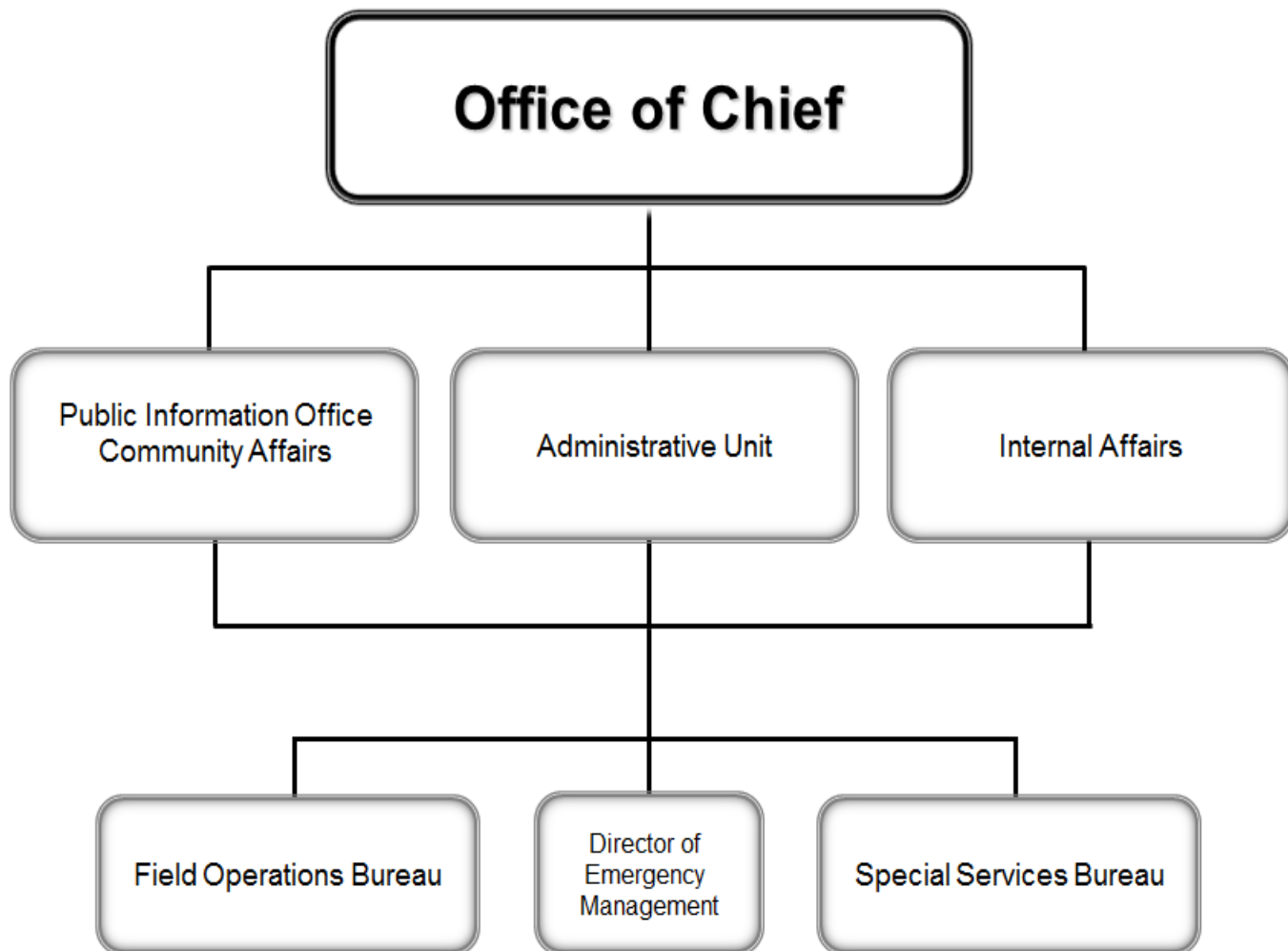


Assistant Chief Javaro Sims was born in Boynton Beach. Assistant Chief Sims is a graduate of Florida A&M University and Lynn University where he obtained a Master's Degree in Criminal Justice Administration. He qualified for the 1980 and 1984 Olympic trials and played professional football in the Canadian Football League. After college, he worked as a teacher for four years. During his fourth year, he applied to the Delray Beach Police Department and was hired in 1992. Assistant Chief Sims has attended Future Law Enforcement Executives, Future Police Chiefs, Senior Management Institute for Police Executive Senior Management course, Southern Police Institute (University of Louisville) and the FBI National Academy in Quantico, Virginia, Session 255. He is a member of the Palm

Beach County Association of Chiefs of Police, Florida Police Chiefs Association, NOBLE (National Organization of Black Law Enforcement Executives), FBI National Academy Associates, Inc., IACP (International Association of Chiefs of Police), Sunrise Rotary, KOPMN (Mentoring), Boys to Men Mentoring and the Omega Phi Psi Fraternity.

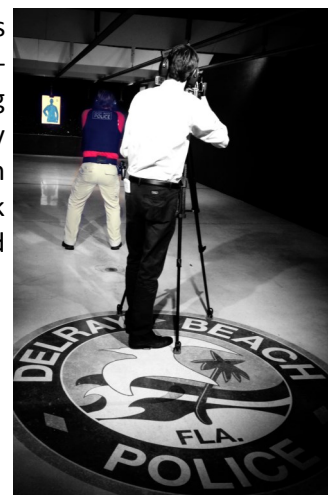
Assistant Chief Maria Olsen was born and raised in West Palm Beach. Mary, as she is known, attended Cardinal Newman High School and received an Associate's Degree in Criminal Justice from Palm Beach State College. She started her law enforcement career in September 1982, as a police cadet with the West Palm Beach Police Department and in October of 1984, became a police officer. Mary worked in several areas of the department including Patrol, Organized Crime, Criminal Investigations, and Community Policing. Mary rose through the ranks and subsequently retired in July 2014 as the assistant chief of police assigned to the Operations Bureau. In September of 2014, Mary joined the Delray Beach Police Department as an assistant chief of police and is currently the Operations Chief. Mary also attained her Bachelor's Degree in Human Resource Management and her Master's Degree in Organizational Leadership from Palm Beach Atlantic University. Mary is also a graduate of the Southern Police Institute Administrative Officers Course, Class #110, at the University of Louisville, Kentucky.





COMMUNITY AFFAIRS/PUBLIC INFORMATION OFFICE

The Public Information Office consists of a public information manager who is the liaison between the police department and the community. Using a combination of traditional and social media, this position is responsible for communicating the agency's messages, which include new programs, crime trends, community events, safety warnings, breaking news updates and feature stories, to the public. In 2015, the public information manager managed about 18,000 followers on Facebook and Twitter. The public information manager also attends community events and gives tours of the police department.



ADMINISTRATIVE UNIT

The Administrative Unit consists of one administrative officer, one administrative assistant and one payroll administrative assistant. This unit is responsible for overseeing and managing the departmental budget, handling payroll for all employees, internal oversight of purchasing, preparation of agenda items, processing of daily invoices, grant reporting and inventory.



*Administrative Officer Kristina
Maricic and Administrative
Assistant Rosio Beltran*

INTERNAL AFFAIRS SECTION

The Internal Affairs Section consists of one lieutenant and an administrative assistant. This section is responsible for investigating all serious allegations of misconduct or alleged wrongdoing on the part of employees, regardless of the source. Investigative guidelines are essential to ensure the Delray Beach Police Department is conducting administrative investigations in an impartial manner.

DIRECTOR OF EMERGENCY MANAGEMENT

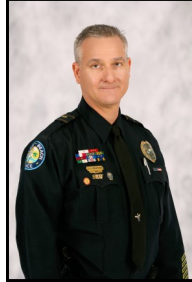
This position was created in 2015 to solidify the city's ability to prepare for, respond to, mitigate and recover from cascading effects of man-made and natural disasters upon the community. This sworn position, develops, coordinates and manages the city's Emergency Management Plan and maintains and coordinates staffing and internal procedures to enable coordinated operations during emergencies. It is also responsible for providing training, exercises and drills, as well as preparing applications for submission to state and local government agencies.

SWORN MEMBERS OF COMMAND STAFF

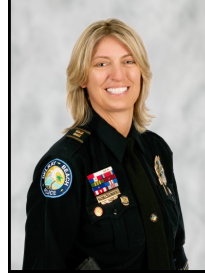
Investigative Division



Captain Thomas Mitchell



Lieutenant Scott Privitera



Captain Rachel Saunders



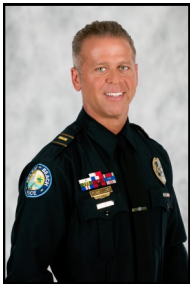
Lieutenant Michael Moschette

Community Response Division

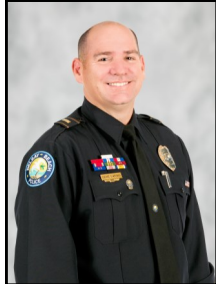
Community Patrol Division



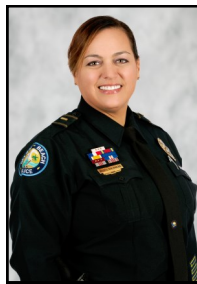
Captain John Battiloro



Lieutenant Russ Mager



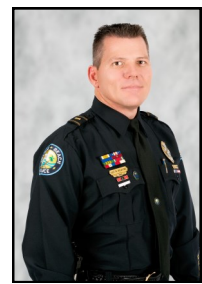
Lieutenant Gene Sapino



Lieutenant Nicole
Guerriero



Lieutenant Vinnie Gray



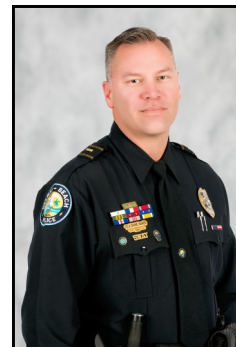
Lieutenant Robert
Keating

Support Services Bureau



Lieutenant David Weatherspoon

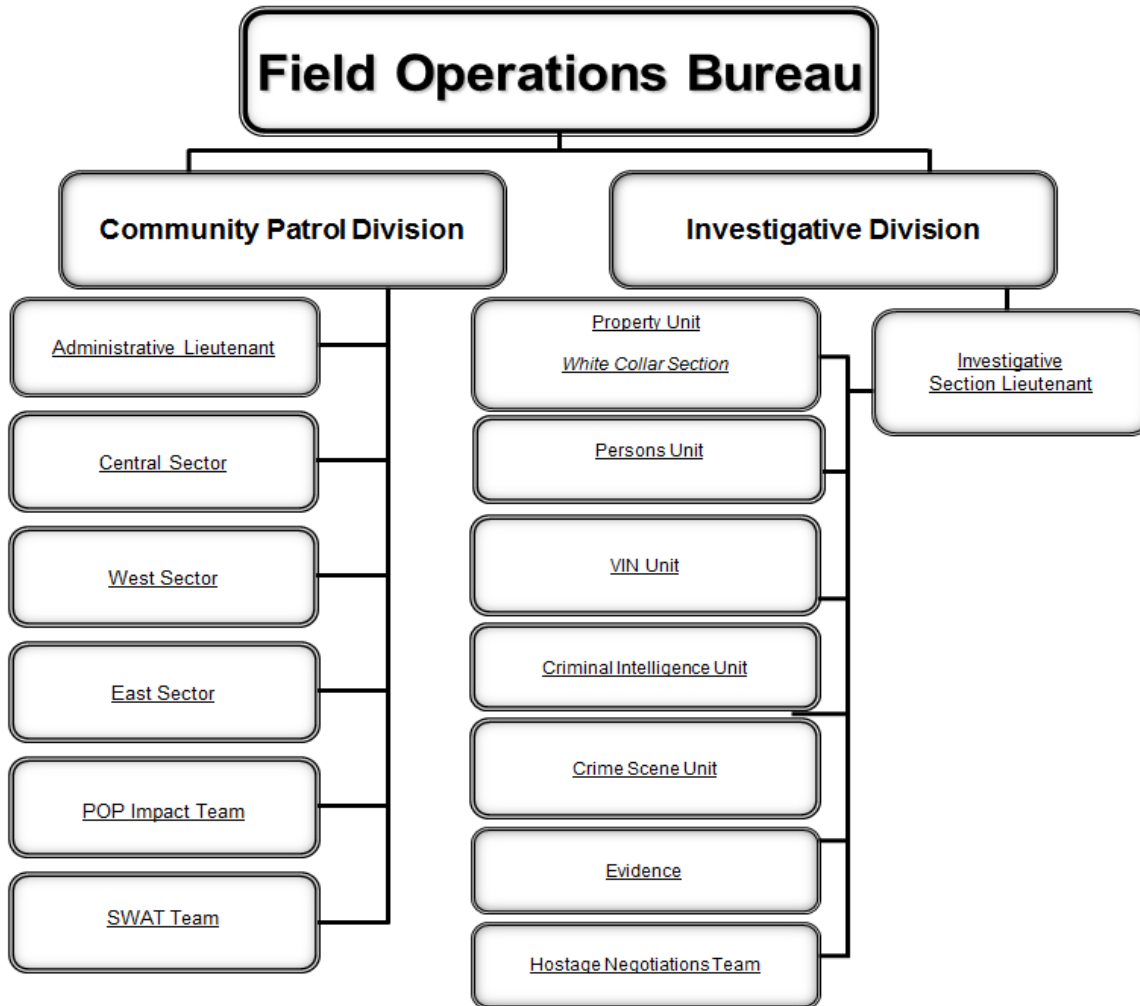
Internal Affairs Section



Lieutenant John Crane-Baker

FIELD OPERATIONS BUREAU

The Field Operations Bureau is under the command of Assistant Chief Mary Olsen who oversees the functions of the Community Patrol Division and the Investigative Division. Each division is under the command of a captain, who is responsible for employees assigned to the field operations side of law enforcement.



COMMUNITY PATROL DIVISION

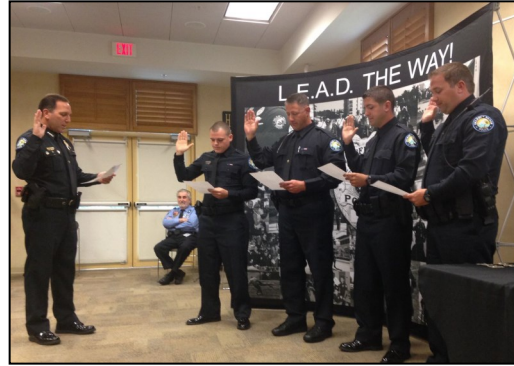
The Community Patrol Division is composed of one captain, one administrative assistant, five lieutenants, 15 sergeants, 71 officers and three K-9s. The focus of the Community Patrol Division is to ensure that the residents, business owners and Delray Beach visitors are provided with the most comprehensive police services. This is accomplished through community policing partnerships and problem-solving initiatives. The Community Patrol Division is often referred to as the backbone of the agency as the officers serve as first responders to critical incidents, conduct initial follow-up, respond to calls for service and enforce criminal statutes and municipal ordinances.



Captain John Battiloro



Sergeant Michael DeBree checking in at the Bi-Lo Market



New officers being sworn in during the Quarterly Awards Ceremony

The Community Patrol Division provides protection for our community and maintains social order through the enforcement of laws and ordinances. This is accomplished through proactive policing services utilizing both traditional and nontraditional policing methods. With the implementation of the Intelligence-Led Policing concept, officers now have the opportunity and resources to address crime in their areas of responsibility.



During the 2015, Community Patrol officers practiced community policing and problem solving in combination with the following traditional enforcement efforts: made 2,458 arrests, issued 12,362 Uniform Traffic Citations and 7,704 Traffic Warnings, responded to approximately 54,051 calls for service, conducted 53,416 building checks/extra patrols and had 4,215 field contacts with suspicious persons. The community patrol officers conducted 9,080 “walk and talks” in the community throughout the year. This initiative encourages officers to get out of their vehicles and interact with residents, merchants and visitors in the area and get involved in a proactive manner. This positive interaction also helps to reestablish the partnerships between the police department and the community. Officers also organized and participated in several community cleanups and holiday charity events.



Community involvement is important to the Community Patrol Division and its officers. The various programs and events that take place during the year enable the officers to engage with the community in a setting outside of a typical police encounter. These encounters allow the public to see the other side of our officers in a more casual way. In 2015, officers participated in events such as the March Against Violence, the Martin Luther King Day Freedom Walk, the Law Enforcement Torch Run for the Special Olympics, “Stamp Out Hunger” Food Drive and the National Night Out. They also participated in annual events such as the “Delray Reads” program at local elementary schools, “Walk a Child To School” Day, the Teen Summit and the outreach programs that take place during the holiday season, such as the Kids and Cops Holiday Toy Drive. Officers also continue with their involvement with Kids and Cops program which has been a long-standing and popular program offered by our department.



Officer Barry Kopplin enjoying Thanksgiving dinner during a local community event



Officer Adrian Rackauskas and Assistant Chief Mary Olsen during the annual holiday toy drive



SWAT Team operator Officer Rodner Guillaume during a community event at Home Depot

The K-9 Unit consists of three officers and three certified police canines. Certified in both tracking and narcotics, these officers and their K-9 partners are valuable law enforcement teams who are able to provide effective patrol efforts through the enhanced abilities of the canine. These teams conduct high visibility patrols and perform the traditional activities of law enforcement, but they are also able to supplement the road patrol officers through tracking and locating suspects and evidence under difficult circumstances and apprehending combative and dangerous suspects who would otherwise pose a danger to other officers. During 2015, these teams were utilized 308 times, had 48 apprehensions and detected numerous articles such as weapons and illegal narcotics. The K-9 Unit also conducted demonstrations at various events and organizations throughout the community that enabled the public to see these teams in action.



K-9 Benny



K-9 Ghost



K-9 Ike



K-9 Demonstration: Banyan Creek Elementary "Safety Day" (l to r): K-9 Officer Mintus and K-9 Officer Frazier and his K-9 partner, Benny



Officer Andrew Mintus with K-9 Benny: Demonstration on "Safety Day"

POP IMPACT TEAM

The newly formed Impact Team was an addition to the Community Patrol Division in 2015; however, its root concept dates back to the 1980's. This team is divided into three units, with each unit composed of a sergeant and four officers and assigned to a patrol sector. Their mission is to impact street crimes and disorder, utilizing problem-solving strategies, community policing philosophies and Intelligence-Led Policing initiatives. They focus on target offenders using traditional policing enforcement, but also work in partnership with residents and business owners in their assigned areas to address non-criminal community problems and improve the quality of life in the neighborhoods.



Impact Team cleaning up an alleyway



Impact Team conducting an investigation

SWAT TEAM

The SWAT (Special Weapons and Tactics) Team is a part-time unit consisting of one commander, three team leaders and 17 police officers. During 2015, the SWAT Team served 15 narcotics-related search warrants and responded to two callouts for barricaded subjects.



INVESTIGATIVE DIVISION

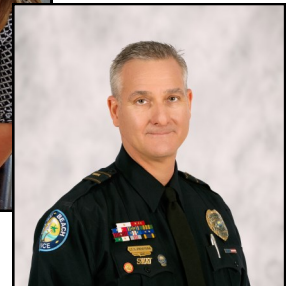
The Investigative Division is composed of one captain who commands two sections; the Criminal Investigative Section that includes Crimes Against Persons, Property, White Collar Crime, Evidence and Crime Scene, and the Vice Intelligence and Narcotics Section which consists of the Narcotics Enforcement Unit, Criminal Intelligence Unit, and Crime Analysts.



Captain Thomas Mitchell



Members of the Investigative Division



Lieutenant Scott Privitera

PROPERTY UNIT

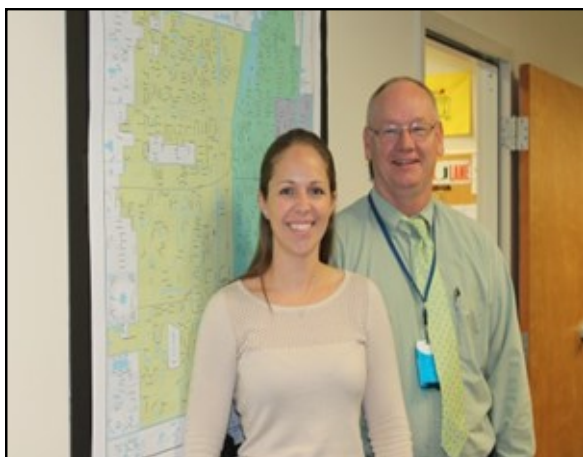
Crimes Against Property Unit is made up of one sergeant and three investigators who are assigned to sectors. These detectives investigate residential/commercial burglaries, thefts, car thefts and vandalism.

This year, the team identified a ring of criminals from Venezuela who were breaking into cell phone stores. Their investigation led them to Miami-Dade County where the ring leader was arrested. Detectives recovered property taken during various crimes committed in the Palm Beach, Broward and Miami-Dade counties.

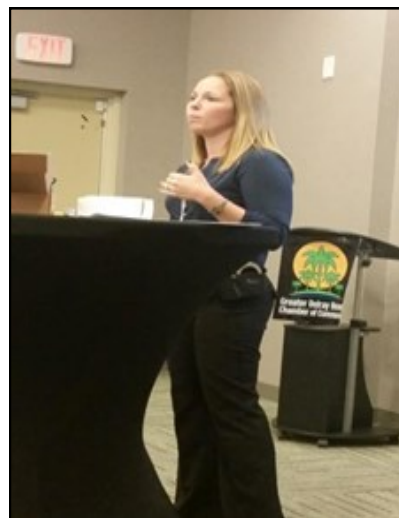


WHITE COLLAR CRIME UNIT

White Collar Crime is also under the supervision of the property sergeant. The two investigators work closely with county, state, and federal partners to identify and infiltrate criminal enterprises that specialize in fraudulent practices and identity thefts, targeting our elderly community. These detectives take a proactive approach and hold seminars with various homeowner associations and civic organizations educating the vulnerable population on how to protect themselves from becoming a victim of crime.



Detectives Kimberly Mead and Bruce Dinan



Detective Kimberly Mead conducting a presentation at the Delray Business Leads Group

PERSONS UNIT

Crimes Against Persons is comprised of one sergeant and five investigators. These detectives investigate homicides, sexual assaults, robberies and crimes against children and involving children. This year, they handled 637 cases resulting in 71 arrests. One of the high profile cases handled this year was the murder at 1130 W. Atlantic Avenue where a male was shot four times in the torso. Through the assistance of the community and advanced technology, the suspects were identified within the first 12 hours of the crime leading to the arrest and indictment of the suspects.

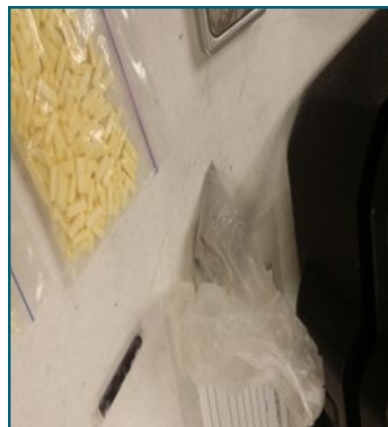


VICE, INTELLIGENCE AND NARCOTICS UNIT

The Vice, Intelligence, and Narcotics Section consists of the Narcotics Enforcement Unit and the Criminal Intelligence Unit. The Narcotics Enforcement Unit consists of one sergeant and five agents (one of which is assigned to the Drug Enforcement Administration) and one administrative assistant.



This unit investigated 149 cases that were mid-level to high-level organized syndicates distributing drugs throughout our city. They affected 107 arrests this year and seized drugs with a street value of \$38,900.00 and seized one gun (rifle). In addition, they investigated multiple heroin overdose deaths throughout the year.



Operation “Drop Shot” was an organized ring from Colombia that was importing heroin which was being distributed on our local streets. Two kilograms of Heroin were seized along with \$80,000, five vehicles and three guns. This ten-month investigation led to the arrest of 19 people, which are all being prosecuted in the federal court system.

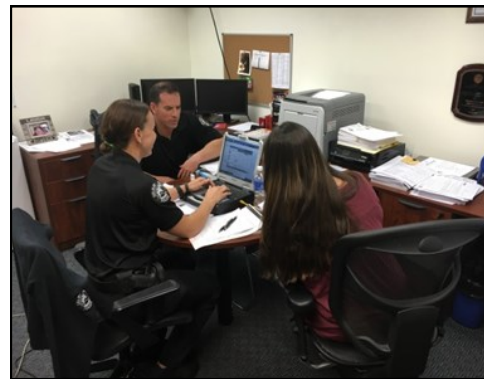
CRIMINAL INTELLIGENCE UNIT

The Criminal Intelligence Unit is comprised of three detectives and two criminal intelligence analysts. The unit monitors information associated with developing crime patterns or target offenders, resulting in actionable intelligence for deployment of resources and manpower. They also monitor prolific offenders and criminal registrants for activity that could be associated to developing crime trends.

This year, the team with the cooperation of Community Patrol units conducted house checks on persons on community control (probation) to ensure they were compliant with the court sanctions. This partnership with the Department of Corrections has led to the seizure of seven guns, 2.5 pounds of marijuana, 70 grams of cocaine and 24 arrests.



Detectives Adrian Rackauskas, Nicole Lucas and Matthew Naparstek



Members of the Criminal Intelligence Unit conducting crime trend analysis

CRIME SCENE UNIT

Crime Scene Unit is made up of one supervisor, four full-time investigators and two part-time technicians; one of whom is a latent fingerprint examiner.

This year the team processed 1,666 scenes; three of which were homicides. Latent fingerprints were recovered from 477 of the scenes with 235 identifications being made. DNA was recovered at 224 of these crime scenes and submitted for analysis.

The Delray Beach Police Department's Crime Scene Unit is a full-service unit with the ability to reproduce, photograph, examine latent fingerprints and recover DNA from various items identified as part of the crime. The unit also has the technology to test fire firearms for analysis through the BrassTrax program.



Crime Scene Investigator Thomas Tustin

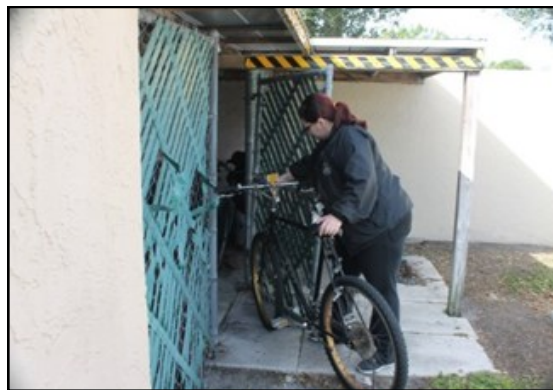


EVIDENCE SECTION

The Evidence Unit is comprised of two custodians who processed 8,648 pieces of evidence this year. The meticulous process of vouching property is paramount for criminal prosecution. The custodians must ensure each piece of property is properly categorized, stored, and protected for potential criminal and civil proceedings. This year the team entered all of the department's cold case files into our databases. Some of the cases were from the 1980's.



Evidence Custodian Mark Syrowski



Evidence Custodian Coleen Salzer



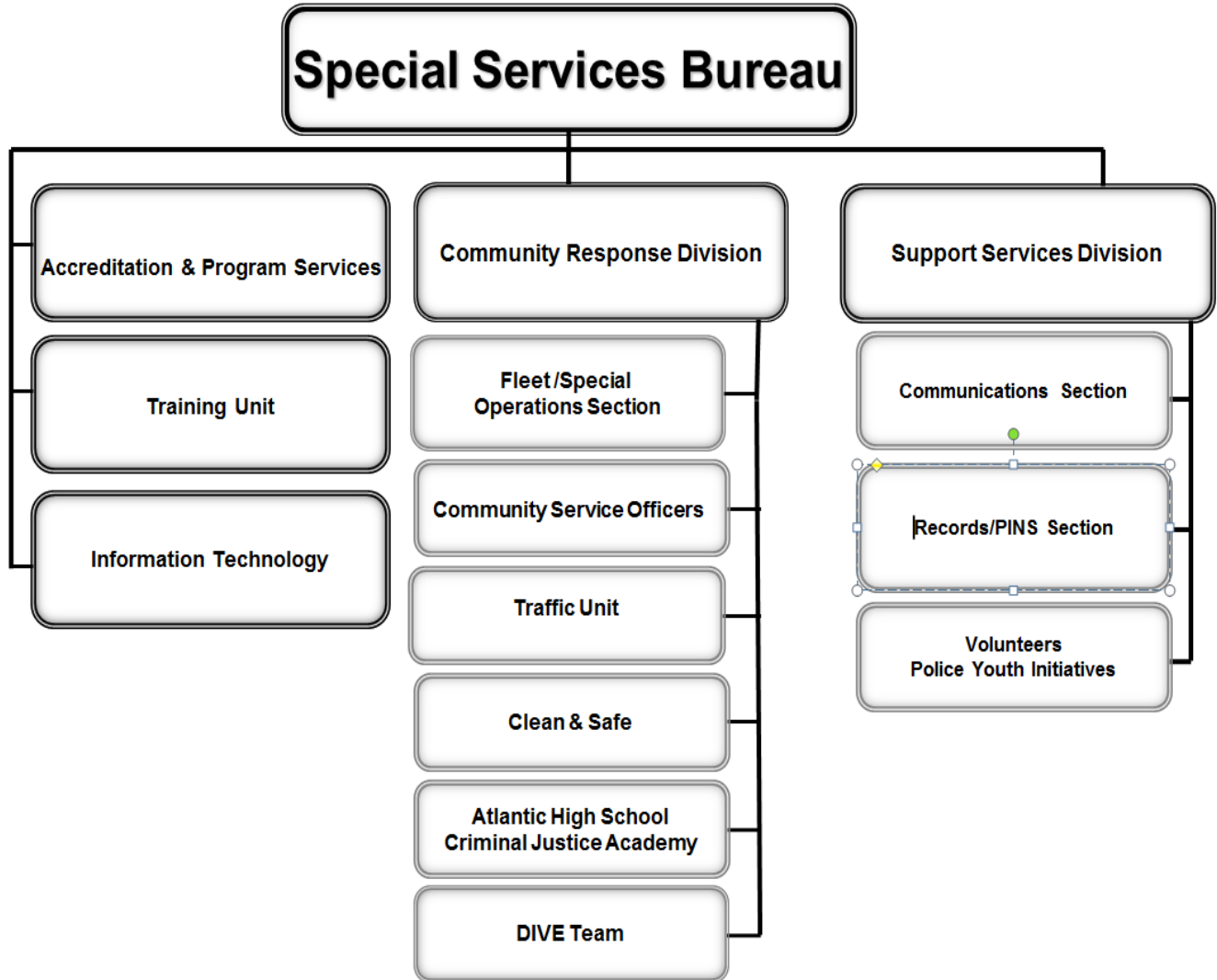
Evidence Room

HOSTAGE NEGOTIATIONS TEAM

The Delray Beach Police Department Hostage Negotiation Team is comprised of 12 individuals including two sergeants and ten officers/detectives. The negotiators train every other month and are subject to callout when needed. In 2015 the negotiators were utilized on two occasions, successfully convincing the suspects to surrender without incident.

SPECIAL SERVICES BUREAU

The Special Services Bureau is under the command of Assistant Chief Javaro Sims who oversees the functions of the Accreditation and Program Services, Support Services, and Community Response Divisions.



ACCREDITATION UNIT

The Accreditation and Program Services Unit monitors compliance with 276 state law enforcement accreditation standards and re-accreditation activities, manages the PowerDMS electronic document management system which houses hundreds of department-written directives and training and legal bulletins, creates, coordinates and assists with new department policy and new program implementation, coordinates the purchase of special-ordered office supplies and furniture and coordinates and manages the department's Career Officer and Career Crime Scene Investigator programs. The Accreditation Manager supervises the unit and oversees activities of the Administrative Program Coordinator.



TRAINING UNIT

The Training Unit is composed of one sergeant, two officers and one administrative assistant with other personnel certified as instructors to assist with specific training needs. Aside from training the organization's employees, the unit is also responsible for equipment procurement and recruitment of all department employees.

In 2015, members of the police department participated in approximately 14,187 hours of training with an approximate cost of \$127,262.85. The Training Unit coordinated 32 training courses and 14 events (such as Intelligence-Led Policing, Tactical Responder, Defensive Tactics, Leadership Delray, and Rape Aggression and Defense classes). The unit coordinated 14 job postings and processed 1,430 applications, which led to the hiring of 29 police department employees.



Training Unit conducting various training exercises with sworn personnel throughout the year

INFORMATION TECHNOLOGY UNIT

The Information Technology Unit (IT) is composed of one systems manager and one technical support specialist. Together they maintain the department's 180+ laptop computers and 100+ desktop computers, ensuring software is current and functioning so employees are able to do their jobs efficiently. This unit also ensures officers have the latest technological advancements, such as 101 in-car cameras, fingerprint identification systems and audio equipment that enhance investigative initiatives and courtroom testimony. They are also responsible for training on any new public safety technology (hardware/software) that is introduced department wide and do refresher training as needed. Aside from their day to day tasks, this year the team launched Residential Security and Bicycle Registration online. These applications are accessible from the Police Departments P2C website (<http://p2c.mydelraybeach.com/p2c/main.aspx>) and allow citizens of Delray Beach the ability to request security checks for their residences and/or businesses and also allows users to register their bicycles.

COMMUNITY RESPONSE DIVISION

The Community Response Division consists of one captain, one lieutenant, three sergeants and one civilian supervisor. There are 13 police officers, one auxiliary officer, seven community service officers and one administrative assistant also assigned to this division.



Captain Rachel Saunders

FLEET

One sworn auxiliary officer is responsible for the department's fleet management and is the liaison with the city garage. The fleet is comprised of 209 vehicles to include marked and unmarked cars/SUVs, golf carts, ATV's, motorcycles and Segways. All of the marked vehicles are equipped with an in-car video camera system that has the ability to capture citizen encounters.



COMMUNITY SERVICE OFFICERS (C.S.O.'s)

This unit consists of one civilian supervisor and seven civilian community service officers. This unit's primary functions are investigating traffic crashes, assisting with school crossings and conducting traffic control. They also supplement the Community Patrol Division by assisting with disabled vehicles. The team handled 1,759 traffic crashes in 2015 and issued 1,262 parking citations. Additionally, they handled 1,626 delayed crime reports.



From left to right—Supervisor Fred Glass, C.S.O.'s Jackie Mobley-Brown, Shari Roth, Marlo Johnson, Michelle Petricone, Kelly Lofts, Brenda McBrinn, Jermaine Frazier and Auxiliary Officer James Wintemute

TRAFFIC UNIT

The Traffic Unit consists of one sergeant and four officers. A combination of vehicle and motorcycle patrols are utilized to enforce traffic laws throughout the city. Educating the motoring and pedestrian public is another critical function of the Traffic Unit. Implementing Florida Department of Transportation approved campaigns such as the Aggressive Driving Enforcement and the Pedestrian and Bicycle Safety Enforcement campaigns are examples of our larger scale education efforts. Safety Day at Banyan Creek Elementary School, the Car Fit Program for Seniors and the Safe Kids Child Safety Seat Program are educational programs that are provided to our community members. The unit also investigates Traffic Homicide cases, serious bodily injury crash cases, conduct motor escorts, monitors high crash intersections, is involved in various special events and produces the Annual Traffic Study.



Members of the Traffic Unit conducting radar speed enforcement



Sergeant Jeff Rasor



From left to right—Sergeant Jeff Rasor, Officers Hannes Schoeferle, Ron Brown and Daniel Cramer

CLEAN AND SAFE UNIT

The Clean and Safe Unit consists of two sergeants, eight police officers and one community service officer. This team utilizes the intelligence-led policing methodology to identify and focus on repeat offenders, deploy resources according to definable crime patterns and forge working relationships with the community. Creating a safe environment for our citizens, business owners and visitors within the designated Clean and Safe area is the driving force behind the unit. The utilization of Segway patrols increase face-to-face citizen/police interactions, improves maneuvering through the busy downtown entertainment district and provides high visibility patrols in West Atlantic Avenue area.



ATLANTIC HIGH SCHOOL CRIMINAL JUSTICE ACADEMY

The Atlantic High School Criminal Justice Academy has one police officer assigned on a full time basis. The program is currently part of the International Baccalaureate Career-Related Certificate program and has 178 students enrolled. Upon completion of the program, the students will graduate with a Community Service Officer certificate and can gain up to nine college credits. Students study multiple aspects of the criminal justice system, engage in various community events and learn leadership skills throughout the program.



Members of the Atlantic High School Criminal Justice Academy

DIVE TEAM

The Delray Beach Police Department's Underwater Search and Recovery Team consists of seven police officers. The designated team leader plans and coordinates 16 hours of team training a month for this part-time team. All members are certified scuba divers and are responsible for the recovery of drowning victims, evidence, vehicles and other property located in any body of water within the city of Delray Beach.



Underwater Search and Recovery Team in action

SUPPORT SERVICES DIVISION

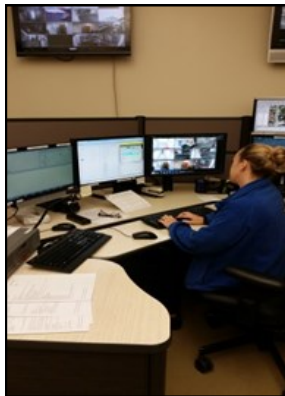
The Support Services Division is under the command of the Support Services lieutenant, who directly reports to the assistant chief. The lieutenant oversees the Communications Section, Records/Police Information Services Section and building preservation.

COMMUNICATIONS SECTION

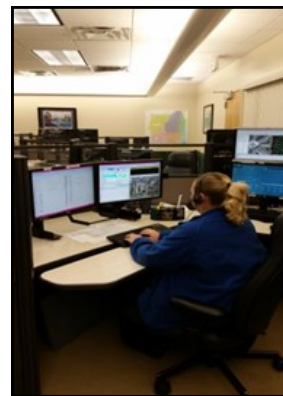
The Communications Center handled 55,953 emergency (E911) calls and an additional 148,115 non-emergency lines (inbound and outbound). Approximately 176,029 incidents were entered into the CAD System (of those 60,558 were calls for service). In addition, 35,343 out of service codes were entered. All calls for service were dispatched under the time requirements allotted. The average for Priority 1 calls was 33 seconds, Priority 2 calls were three minutes and 25 seconds and Priority 3 calls were 15 minutes. Roughly 1,100 records were entered, cancelled or modified into the NCIC/FCIC System. Approximately 1,000 public and internal records requests of our CAD reports and/or telephone/radio recordings were complied with. Over 725 hours of training were conducted/attended and 724 quality assurance reviews were completed. Supervisors completed 1,086 skill enhancement hours and issued 163 contact sheets.



*Communications Specialist
Michelle Rotondi*



*Communications Specialist
Terri Beas*



*Communications Specialist
Nicole McKessy*

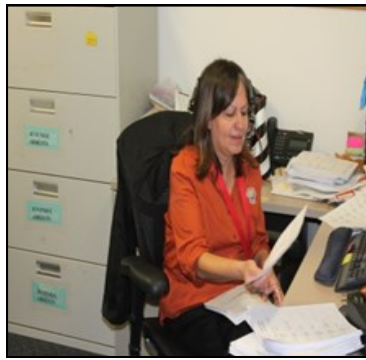
POLICE INFORMATION SERVICES

The Police Information Services Section is comprised of the Front Desk, Records Management and Uniform Crime Reporting (UCR). The section is managed by one non-sworn supervisor and staffed with nine full-time employees and one part-time employee.

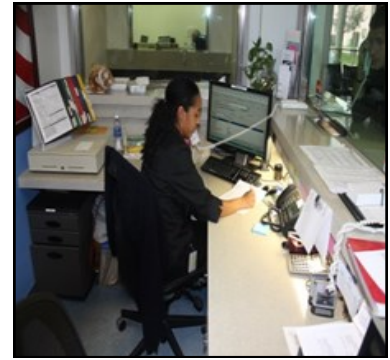
In 2015, the Uniform Crime Reporting Unit reviewed 26,204 incident reports to ensure compliance with UCR standards and proper utilization of OSSSI to accurately capture this data for reporting purposes. A total of 15,824 parking citations were issued and processed in 2015. The revenue generated from paid parking tickets for this time period totals \$436,653.73. The court liaison processed 9,219 subpoenas. Front Desk personnel handled 534 reports, either by telephone or as walk-ins. On March 28, 2015, the front desk began providing services on Saturdays by opening the lobby from 8:00 a.m. to 5:00 p.m.



*Police Information Specialist
Supervisor Tanya Sallette*



*Senior Police Information Specialist
Margarita Castillo*



*Police Information Specialist
Gabriella Menardy*

VOLUNTEER PROGRAM

The Support Services Division commander oversees the department’s Volunteer Program. In 2015 police volunteers consisted of 272 members with 68 being inactive. Collectively, they contributed 32,803 hours of service to the police department. The program consists of Operations and Support Bureaus. The Operations Bureau continued to conduct tours of duty within shopping plazas and residential neighborhoods. The Support Bureau not only assisted officers with administrative tasks, but also reviewed reports involving the elderly and making recommendations for services. The Ambassador Program continues to be a big success. Over 50 volunteers participated during the Delray Affair and Fourth of July events.



*Chief Jeffrey Goldman and members of
the Haitian Roving Patrol*

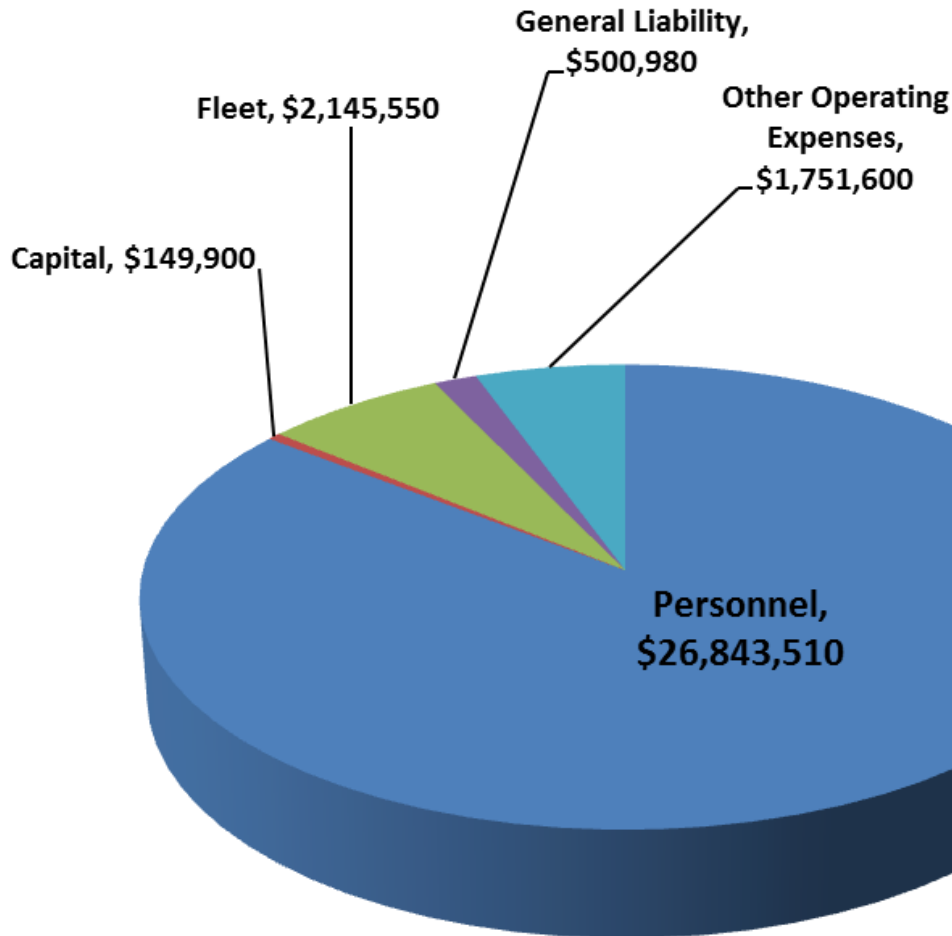


Volunteer Roger Lieberman



*Volunteer Majors Martin Tencer and Bernard
Zaretsky*

Approved Budget FY 2015-2016
\$31,391,540



Detail:

Personnel: Salary, Benefits, and Overtime costs

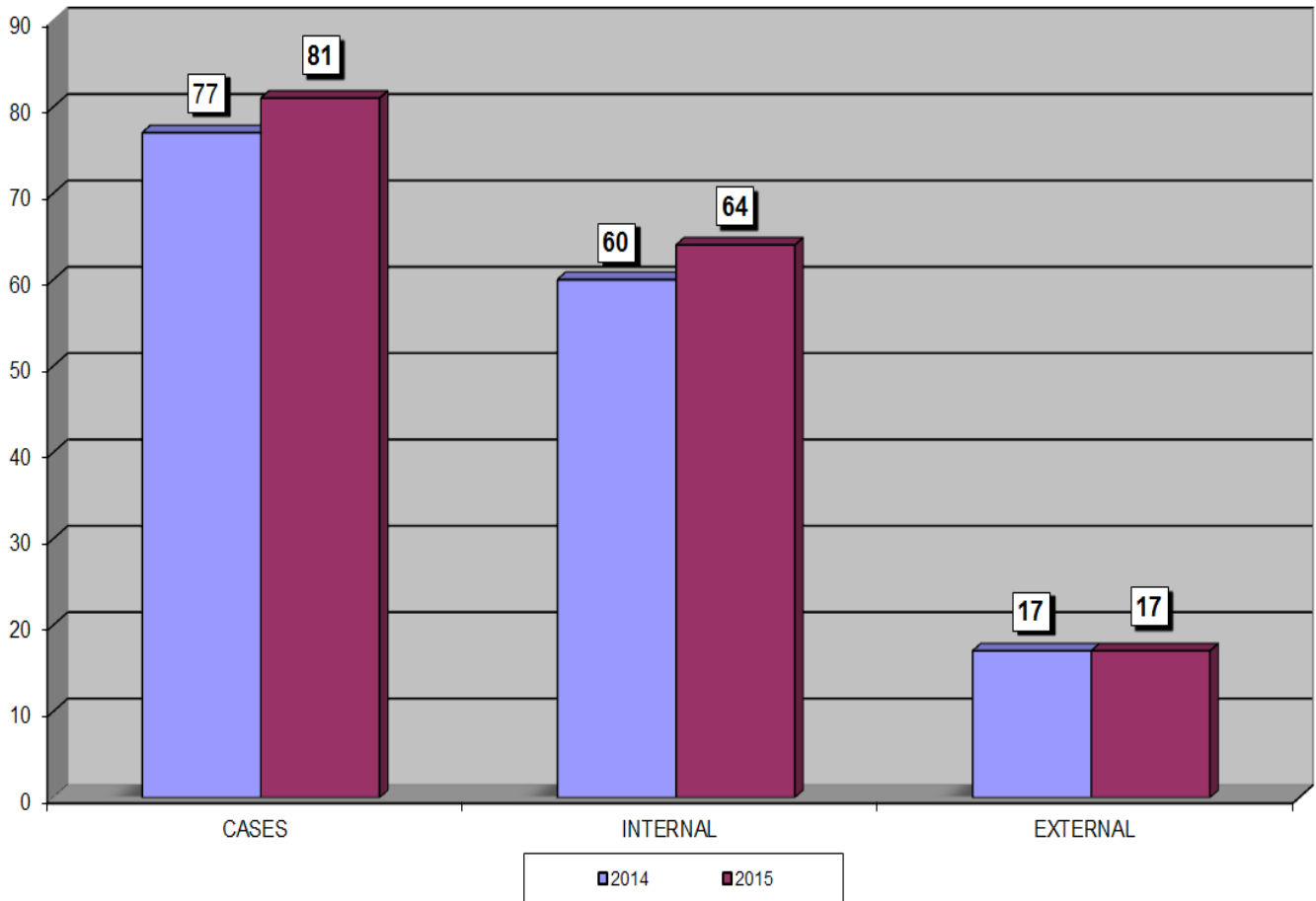
General Liability: Department's share of property and liability insurance

Fleet: Vehicle replacement fund, maintenance, fuel and leases

Capital: Assets valued at \$1,000 or more

Other Operating Expenses: All other expenses such as: janitorial, supplies, training, uniforms, equipment, software maintenance, etc.

Internal Affairs Investigations 2014 & 2015 Comparison

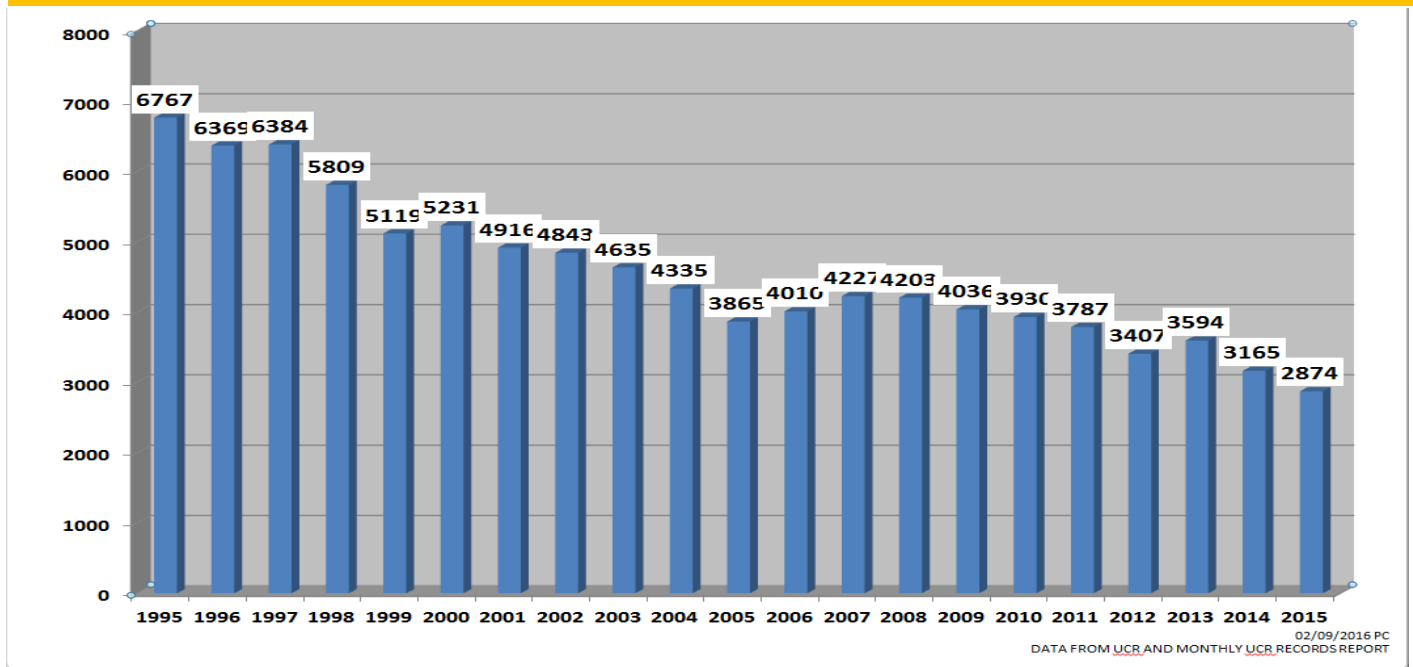


The two-year comparison shows the department's internally initiated investigations and external complaints filed against the department. The complaints range from minor allegations such as Punctuality, Vehicle Crashes, Failure to Appear in Court and Duty Responsibilities, to more severe allegations, such as Excessive Force and Obedience to Laws, Ordinances and Standards.

PART ONE CRIME COMPARISON (UCR) AND ANNUAL PERCENTAGE CHANGE 2011 - 2015

INDEX CRIME									
	2011	% CHANGE	2012	% CHANGE	2013	% CHANGE	2014	% CHANGE	2015
HOMICIDE	4	50.00%	6	-100%	0	N/C	5	-20%	4
SEX CRIMES	27	-3.7%	26	11.54%	29	3.45%	30	20%	36
ROBBERY	183	-14.21%	157	-6.37%	147	-17.01%	122	4.10%	127
AGG. ASSAULT/BATTERY	350	-35.71%	268	16.04%	311	-11.58%	275	-5.45%	260
PERSONS CRIME	564	-23.43%	457	6.56%	487	-11.29%	432	-1.16%	427
BURGLARY	699	-19.17%	565	4.07%	588	-26.19%	434	-16.59%	362
LARCENY	2385	-6.50%	2230	3.54%	2308	-7.45%	2136	-9.64%	1930
MOTOR VEHICLE THEFT	139	11.51%	155	36.77%	211	-22.75%	163	-4.29%	156
PROPERTY CRIME	3223	-8.47%	2950	5.39%	3107	-12.04%	2733	-10.43%	2448
TOTAL	3787	-10.03%	3407	5.78%	3594	-11.94%	3165	-9.16%	2875

PART ONE CRIME 1995-2015



DEPARTMENT AWARDS

2015 EMPLOYEES OF THE MONTH

Evidence Custodian Mark Syrowski

Administrative Assistant Patricia Taylor

Communications Supervisor Amanda Skeberis, Communications Specialists Nicholai Abdul and Terri Beas

Communications Supervisor Amanda Skeberis and Communications Specialists Terri Beas, Lyssa Brooks, Amy Brown, David Goldstein and Nicole McKessy

Administrative Assistant Stacy Tarantino

Communications Specialists Kelly Lofts and Christine Turner

Communications Specialists Kimberly Drinkwater and Terri Beas

2015 OFFICERS OF THE MONTH

Detectives Daniela Quinn and Peter Sosa, Officers Michael Barbire, Terry Jones and Thomas Tolbert

Officer Edward McCabe and Agent Matthew Saraceni

Officer Milton Smith

Officer Nicole Lucas

Officer Charlie Lunsford

Officer Cody Smith

Officers Nicole Lucas and Cody Smith and Detective Gary Ferreri

Detective Michael Geraci and Agent Matthew Saraceni

Detective Michael Geraci and Agent Matthew Naparstek

Officer Michael Schwartz and Sergeant Luis Skeberis

Officers Joseph Grammatico and Barry Kopplin

CHIEF'S ACHIEVEMENT AWARD

Assistant Chief Javaro Sims, Detective Gary Ferreri,
Officer Noel Rusczyk

SUPERVISOR OF THE YEAR

Sergeant Paul Weber

LIFE SAVING AWARD

Officers Randall Wilson and Thomas Tolbert

Officers Cody Smith and John Woods

ROOKIE OF THE YEAR

Officer Rodner Guillaume

COMMUNITY AWARDS RECIPIENTS

Delray Citizens for Delray Police—Officer of the Year

Detective Oscar Leon

Delray Citizens for Delray Police—Employee of the Year

Administrative Assistant Stacy Tarantino

City of Delray Beach SPIRIT Employee of the Fourth Quarter

Officer Michael Barbire

ASIS 2015 Life Saving Award

Officer Adam Whiting

Distinguished Service Award for Enforcement by the Traffic Safety Committee of Palm Beaches

Officer Daniel Cramer

Distinguished Service Award for Special Recognition by the Traffic Safety Committee of Palm Beaches

Officer Justin Reed

Palm Beach County Victims' Rights Coalition Lois Messer Advocate of the Year

Administrative Assistant Dawn Terrizzi



Officers Justin Reed and Daniel Cramer



Administrative Assistant Dawn Terrizzi



Mr. Perry DonFrancisco and Administrative Assistant Stacy Tarantino



Mr. Perry DonFrancisco and Detective Oscar Leon

DELRAY BEACH POLICE DEPARTMENT

www.mydelraybeach.com/police

For Emergencies - dial 9-1-1

Non-Emergency - 561-243-7800

Front Desk/General Information - 561-243-7888

Records Section - 561-243-7830 or 561-243-7831

Training and Recruiting - 561-243-7600

Volunteer Program - 561-243-7879

CHECK OUT THESE WEBSITES

<http://P2C.mydelraybeach.com/P2C>

Delray Beach Police Department Facebook

www.facebook.com/pages/Delray-Beach-Police-Department/184825728216158

www.facebook.com/delraybeachpolicechief

Delray Beach Police Department Twitter: @DelrayBeachPD and @DelrayPD_Chief

Delray Beach Police Department Instagram: delraybeach_pd and delraybeachpd_chief

National Law Enforcement Officers Memorial: www.nleomf.com

Florida Department of Law Enforcement: www.fdle.state.fl.us

Florida Department of Highway Safety and Motor Vehicles: www.flhsmv.gov

U.S. Drug Enforcement Administration: www.justice.gov/dea

Parents - The Anti-Drug: www.theantidrug.com

CONNECT WITH US



POLICE ADVISORY BOARD

The Police Advisory Board acts as an advisory body to the Chief of Police, City Manager and City Commission on policy and resource issues; serves as a conduit for the community to address their issues and community problems through a cooperative effort; reviews community needs, concerns, expectations and responses relative to police services and community policing; advises the Police Department on and provides support for communication and education between the community and the Police Department. For further information, email: policeadvisoryboard@mydelraybeach.com.