

# Quarterly Progress Report

April - June 2024



# 1.34 BILLION GALLONS

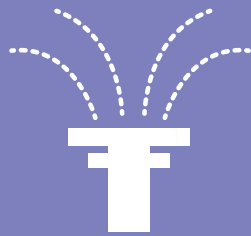


Drinking Water Produced and Treated

# 8,369



Water Quality Tests



# 299 MILLION GALLONS

Reclaimed Water for Irrigation

## Water Treatment Plant

Average Daily Demand

# 14.718

Million Gallons/Day

WTP Maintenance

# 369

Preventive Projects

# 35

Corrective Projects

Wells/Repump Maintenance

# 261

Preventative Projects

# 13

Corrective Projects

## Water/Sewer Network

# 75

Leaks/Low Pressure Reported

# 2

Water Main Repairs

# 55

Stoppages Cleared

# 1,638

Work Orders Resolved

Customer Service

# 1,664

Water related phone calls

## Environmental Resources Compliance

Reclaimed Irrigation Water

# 3.21

Million Gallons/Day

# 1,930

Backflow Notices Sent

# 1,529

Backflows tested

# 44

Notices to Install Backflows

# 1

Spill

## Maintenance

Asset Management

# 2,607

Preventive Projects

# 429

Corrective Projects

## Laboratory

Water Analysis

# 8,328

In-House Tests Completed



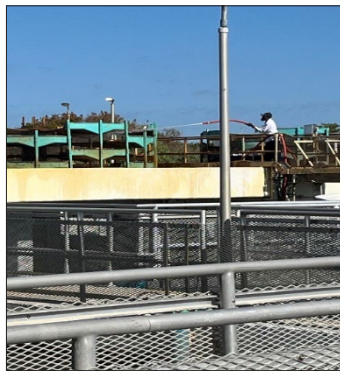
# Water Treatment Plant

## Activities

- Calibration and routine maintenance on the chlorine feeds pumps
- Installation of new chlorine tank to restore redundancy
- Continued rehabilitation of Clarifier 2
- Repaired grit flushing pump to better maintain lime pots
- Cleaned thickener decant rings
- Started dredging the lagoon and retention areas
- Locating raw water lines and testing valves within plant grounds



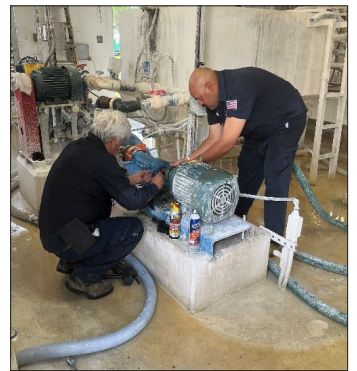
New pump and motor



Maintenance of the aerators



Presentation about drinking water

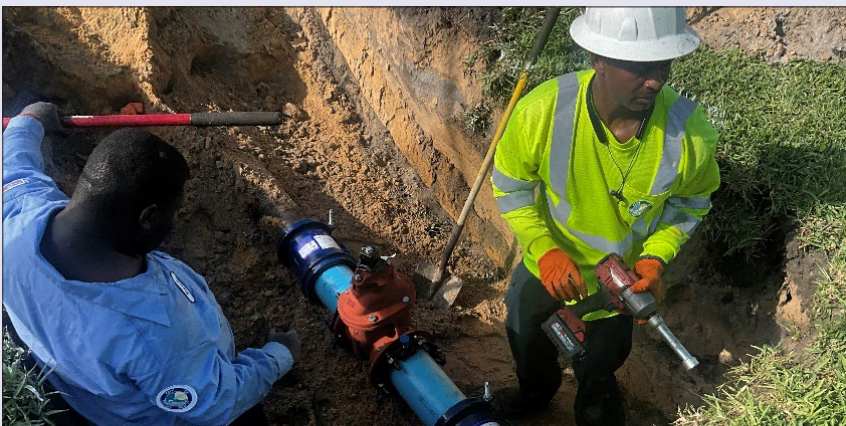


Maintenance of the lime slurry pumps

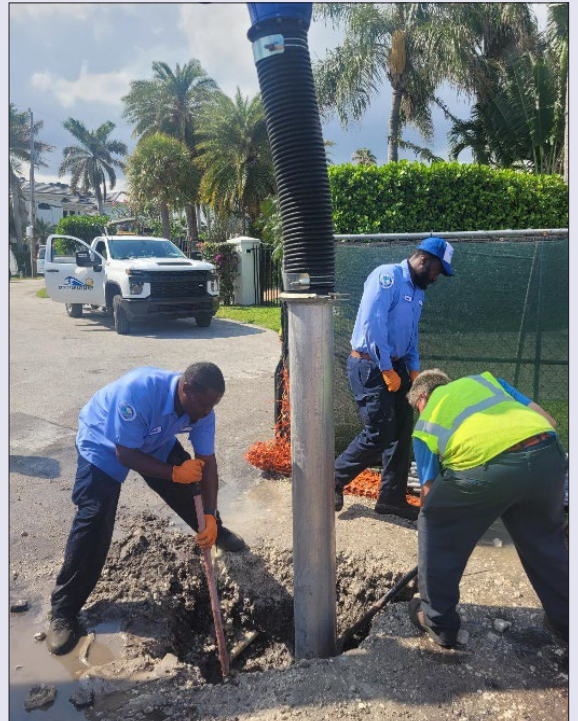
# Water / Sewer Network

## Activities

- Cleared 56 stoppages and resolved 1,638 customer work orders completed
- Processed 1,664 water and wastewater related calls
- Exercised 21 system valves



434 S. Swinton Avenue - Installation of new 6" tank drain valve



3041 Jasmine Terrace - Water service repair





# Maintenance

## Activities

- Repaired East thickeners, installed new actuators on Filter 2 and cleaned lime silo slakers at Water Treatment Plant
- Repaired Pump 2 at Miller Park Repump Station
- Painted building Lift Station 34 and 50
- Replaced pumps at Lift Station 60 and 19
- Replaced wet well doors at Lift Station 34
- Replace pump and motor in Raw Water Well (RWW) 31
- Rehabilitated RWW 25
- Began installing valve box controls and new vacuum pump at South Pump Station



Recovery basin pump installation



Lift Station 60 pump replacement



East thickeners repairs



Filter 2 actuator installation

# Laboratory

## Water Treatment Plant Finished Water Quality

Tests	Target	Ave
pH	8.2-9.0 units	8.71
Alk	>40 mg/L	54
Ca Hard	>31 mg/L	81
Turb	0-1.0 NTU	.2
Color	0-15 units	13
Cond	---	391
Fe	0-0.1 mg/L	0.09
NH <sub>3</sub> -N free	<0.15 mg/L	---
F	0.5-0.7 mg/L	0.06
Cl <sub>2</sub>	0.6-4.5 mg/L	4.9
O-PO <sub>4</sub>	>0.20 mg/L	0.273

## Activities

- Continued hiring search for Quality Assurance Analyst
- Continued staff training for the new Ion Chromatography (IC)
- Continued proficiency testing
- Continued audit reviews and preparation
- On-site installation of new LIMs, along with building configurations, tables, and uploaded files
- Developed bromide method

## Distribution System Water Quality

Tests	Target	Ave	Min	Max	Count
Residual Chlorine	0.6-4 mg/L	3.7	0.64	5.1	NA
T. Coliform	<= 4 counts	1.2%	0	1	1
O-PO <sub>4</sub>	>0.20 min	0.357	0.193	0.455	NA



# Environmental Resources Compliance

## Activities

### Cross-Connection Control:

- Inspected 126 reclaimed cross connections
- Hand-delivered 489 shutoff notice letters for non-compliant back flow prevention devices
- Tested 56 City owned backflow prevention devices

### Utilities:

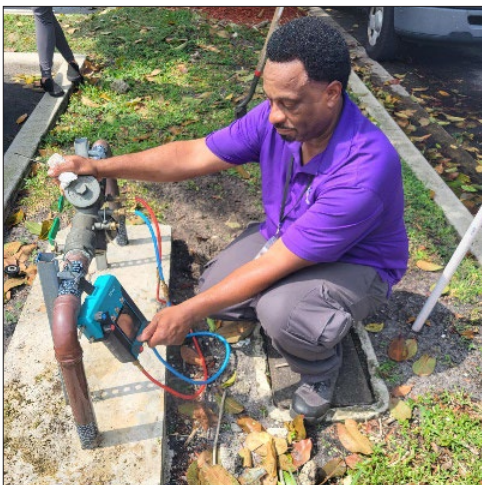
- Completed 427 development plan permit reviews
- Completed the service line survey project
- Finalized annual inspections on 6 IPP locations
- Performed inspection of the public works fuel site with Palm Beach County



Locating service line of lift station for backflow assembly installation



Air emission inspection with FDOH and WTP



Pressure test on a backflow device



Performing conductivity testing