



# CITY OF DELRAY BEACH

OFFICE OF THE CITY MANAGER

100 N.W. 1<sup>ST</sup> AVENUE • DELRAY BEACH • FLORIDA 33444 • (561) 243-7015



## City Commission Information Letter

January 13, 2023

In Remembrance of Dr. Martin Luther King, Jr.

### **Current Trajectory for Completing the Crest Theater Building Renovation**

Both the Office of the City Manager and that of Director of Public Works Missie Barletto are pleased to report that staff and contractor engagements were initiated earlier this week to begin the renovations at the Crest Theater. Public Works staff will coordinate with external contractors and architectural vendors, as well as internal staff members assigned for project management.

As noted in the attached baseline schedule and updated, building and construction permits are anticipated to become active in early February, with mobilization and sitework to commence immediately thereafter. Construction is currently anticipated to be completed in August (consistent with the schedule previously communicated to the City Commission during the contractor selection process).

### **Development and Construction of the New Water Treatment Plant Facility**

With the November 2022 authorization of Hazen and Sawyer to serve as the City of Delray Beach's owner's representative to support the development and construction of the Department of Utilities New Water Treatment Plant facility (and related infrastructure), please be advised that various tasks are currently underway to help finalize recommendations, including treatment capacity considerations to support pending regulatory water quality requirements from the Environmental Protection Agency.

As referenced in the attached electronic mail message from Director of Utilities Hassan Hadjimiry, guidance to this effect includes compilation of a report that will summarize recommendations for a specific type of treatment process to be

**S**ERVICE • **P**ERFORMANCE • **I**NTEGRITY • **R**ESPONSIBLE • **I**NNOVATIVE • **T**EAMWORK

## **City Commission Information Letter**

**January 13, 2023**

**Page 2**

employed at the new facility. Considerations to this effect would include nanofiltration, reverse osmosis, or other available technologies.

Arrangements are being made for a presentation by Hazen and Sawyer to take place during the February 21<sup>st</sup> regular City Commission meeting; to publicly offer an informational summary, to include an opportunity to address specific questions and/or observations and move forward with project implementation.

### **Palm Tran Bus Shelter Improvement Program**

As the City of Delray Beach was recently contacted by representatives of Palm Tran to discuss its scope relative to bus shelter improvement scheduled for initiation throughout Palm Beach County in the coming months, please be advised that staff from both agencies are now working collaboratively to coordinate specific infrastructure logistics. This includes location placement of new facilities, as well as refurbishment of existing units that have been determined to be in substandard condition.

As referenced in the attached electronic mail message, Palm Tran Executive Director Clinton Forbes is requesting the opportunity to present to the City Commission. Arrangements to support Mr. Forbes as noted are therefore being offered for the February 21<sup>st</sup> session.

### **Financial Commitments for Annual Dues and Membership Related Expenses**

As the City of Delray Beach enjoys memberships in numerous locally, statewide, nationally, and internationally based municipal, civic, professional, and legislative organizations, both the Office of the City Manager and the Department of Finance recently convened to perform an analysis relative to respective financial commitments, as well as to consider efforts that may be considered duplicative.

As referenced in the attached budget worksheet report from the Department of Finance, total involvement to this effect, including such for related learning materials, publications, subscriptions and the like, reflects an aggregate of budgeted expenditures for the current fiscal year that totals \$158,251. Most

## **City Commission Information Letter**

**January 13, 2023**

**Page 3**

prominent to this effect includes membership dues for the Palm Beach County League of Cities (\$15,935 annually), and the Florida Leagues of Cities (\$10,110 annually).

Current financial management practices and prospective proposed budget processes will likewise take into consideration a cost-benefit analysis, including resulting training and professional development opportunities that would otherwise not become possible via membership commitments.

### **Calendar of Meetings, Activities, and Functions**

An integral focus of this past Wednesday's Executive Leadership Team included a discussion relative to observations and expectations regarding municipal vehicle use, and when it is appropriate to do so while outside the Delray Beach city limits. Another purpose of this dialogue was to reiterate existing policies and emphasize the importance of minimizing liability and exposure via the practice of maintaining municipal vehicles and equipment inside our community to every extent possible.

With this coming business week being abbreviated due to the Martin Luther King Jr. holiday weekend, no information letter will be issued Friday, January 20<sup>th</sup>. Weekly reporting as noted will likewise resume January 27<sup>th</sup>.

Enclosures:

Electronic Mail Message from Missie Barletto – Crest Theater Building Renovation Update  
Baseline Schedule Linear Timeline Chart – Crest Theater Building Renovation Program  
Electronic Mail Message from Hassan Hadjimiry – New Water Treatment Plant Owner's Rep. Progress Update  
Letter from Pal Tran Manager of Legislative & Governmental Affairs DeBorah Posey-Blocker – Bus Shelter Program  
Flyer Distribution – Bus Shelter Improvement Program Collaboration Involving Palm Tran Public Transportation  
Budget Worksheet Report – Organizational/Interdepartmental Dues and Subscriptions  
Calendar for Business Week of January 9, 2023

CM/Documents/City Commission Information Letter 56

## Terrence R. Moore

---

**From:** Barletto, Missie  
**Sent:** Wednesday, January 11, 2023 2:16 PM  
**To:** Terrence R. Moore  
**Cc:** Buisson, Cynthia  
**Subject:** Crest Theater update  
**Attachments:** Old School Theater base schedule.pdf

Good afternoon Terrence,

The construction kick-off meeting for the Old School Square Crest Theater renovations project was held on Monday January 9, 2023. The Contractor, CEI, Architect and City staff were in attendance to discuss the lines of communication, roles and responsibilities, construction schedule, submittals and RFIs, permits and other key discussion items. The Notice To Proceed was presented and discussed.

The attached baseline schedule developed by the Contractor assumes that the permits will be active by February 6, with mobilization and sitework commencing immediately after. The construction is anticipated to complete in mid-August 2023 with permit closeout to follow.

Please let either me or Cynthia know should you have any questions or concerns.

Thanks,  
Missie

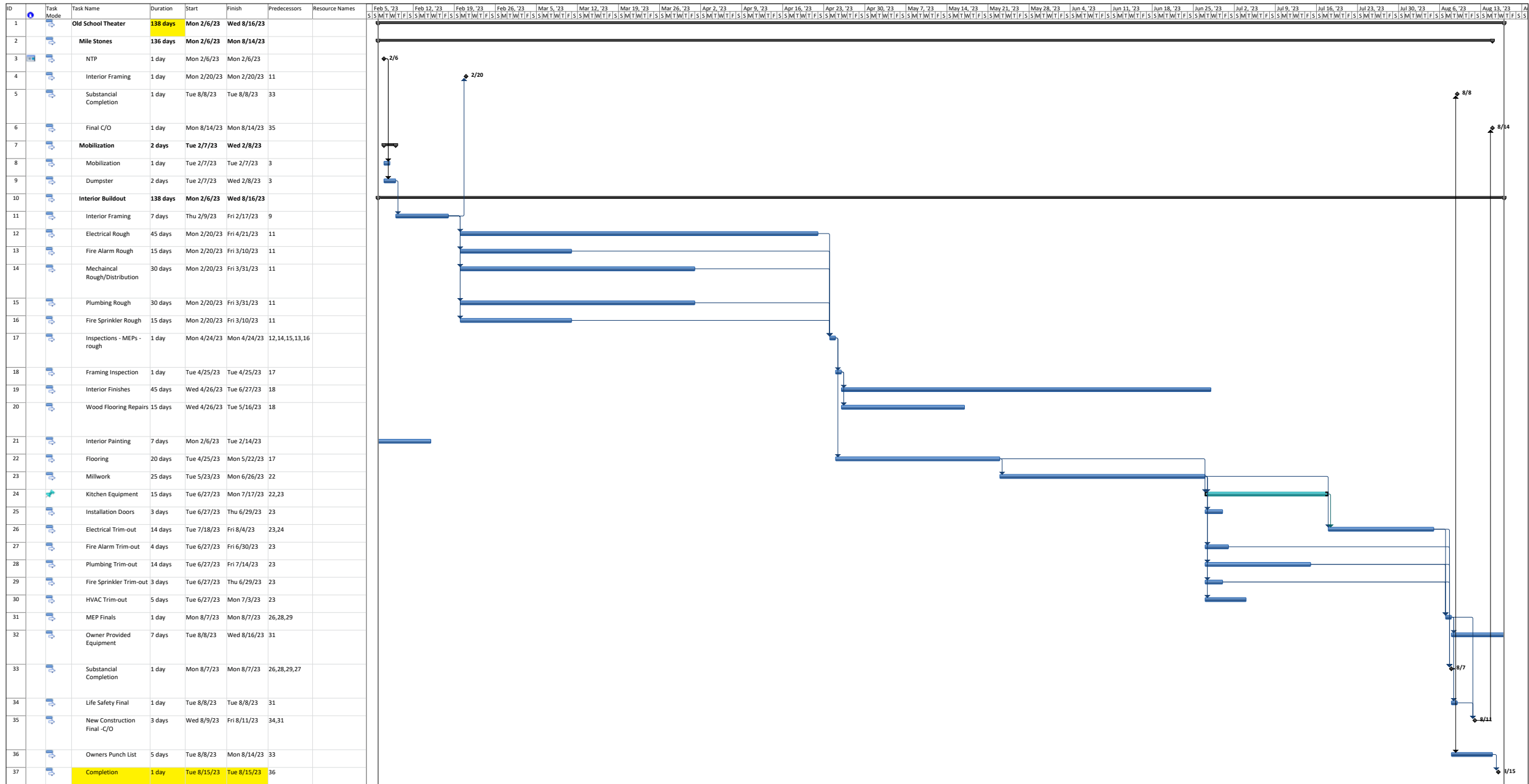
**Missie Barletto** | Public Works Director

☎ 561-243-7000 ext. 4104 | ☎ 239-707-2371 | ✉ [barlettom@mydelraybeach.com](mailto:barlettom@mydelraybeach.com) | 434 South Swinton Avenue, Delray Beach, Florida 33444



## CITY OF DELRAY BEACH

**PUBLIC RECORDS NOTE:** Florida has a very broad public records law. Most written communications to or from local officials, employees, or the general public regarding city business are public records available to the public and media upon request. Your e-mail communications may therefore be subject to public disclosure.



## Terrence R. Moore

---

**From:** Hadjimiry, Hassan  
**Sent:** Thursday, January 12, 2023 12:03 PM  
**To:** Terrence R. Moore  
**Subject:** New Water Treatment Plant Owner's Rep. Progress Update

As you are aware, in November 2022, the City of Delray Beach retained the services of Hazen and Sawyer (Hazen) to serve as the Owner's Representative for the design and construction of the City's new Water Treatment Plant. As part of their first initial Work Authorization, Hazen is validating the existing feasibility reports for the project and updating the treatment capacity size, cost and schedule based on the City's desire to treat existing raw water supply utilizing various treatment technologies to meet future regulatory requirements.

Hazen is also developing a recommended project delivery approach for the project and assisting the City throughout the procurement process. A workshop with the City Commission to present the selected project delivery method and the results of the project validation is tentatively scheduled for the February 21st commission meeting. In addition, the Utilities Department is organizing an Industry Forum to invite firms interested in bidding this project to learn more about the project and visit the site.

Respectfully,



**Hassan Hadjimiry, P.E.**

*Utilities Director*

*City of Delray Beach*

*434 S. Swinton Avenue*

*Delray Beach, FL 33444*

 **561.243.7303**

 [hadjimiryh@mydelraybeach.com](mailto:hadjimiryh@mydelraybeach.com)

**From:** [DeBorah Posey-Blocker](#)  
**To:** [Vega, Brenda](#)  
**Cc:** [Rangel, Delores](#)  
**Subject:** Palm Tran Presentation Request  
**Date:** Monday, December 19, 2022 2:43:19 PM  
**Attachments:** [imageb49f7a.PNG](#)  
[image6e758e.PNG](#)  
[image09bed5.PNG](#)  
[image337c19.PNG](#)  
[image87bd33.PNG](#)  
[image71553e.PNG](#)

---

**\*\*Please be cautious\*\***

This email originated from outside of The City of Delray Beach. Do not click links or open attachments unless you recognize the sender and know the content is safe.

Good afternoon Mr. Moore,

I hope this message finds you well. I am writing on behalf of Clinton Forbes, Executive Director of Palm Tran. Mr. Forbes would like to present Palm Tran's Overview and Bus Shelter Improvement Program at a City of Delray Beach City Commission meetings.

This presentation will allow the Commission to hear about the improvements Palm Tran has made and is proposing for the bus shelters. It will also be the perfect opportunity for the Commission to ask Mr. Forbes any pertinent questions.

Thank you in advance for your time and consideration. If you have any questions, please feel free to contact me.

Happy Holidays,  
DeBorah Posey-Blocker



**DeBorah Posey-Blocker**  
Manager Of Legislative & Governmental Affairs  
Tel: 561 841-4245  
[dposeyblocker@pbegov.org](mailto:dposeyblocker@pbegov.org)  
<http://www.palmtran.org>

*We provide access to opportunity for everyone; safely, efficiently and courteously.*

# Bus Shelter Improvement Program



## NEW FEATURES

- ✓ Shelters with seating
- ✓ Digital displays & ad panels
- ✓ Signage & lighting
- ✓ Bicycle racks
- ✓ Trash receptacles

## Request for Proposals

1. Amenities
2. Advertising

## Design & Construction

PBC Facilities Development

## Project Details

- \$23K to 132K per stop
- Construction in spring 2023

## Existing Infrastructure

- 351 bus stops
- 68 shelters
- 27 benches
- 16 pole-mounted seats
- 11 shelters in UNC pockets

## Installation & Maintenance

- City of Delray Beach
- Outfront Media
- Creative Outdoor Advertising
- Private developers

## Palm Tran Contacts

**Clinton B. Forbes, Executive Director**  
(305) 343-6303 | CForbes@pbcgov.org

**Yash Nagal, Transit Planning Manager**  
(561) 841-4238 | YNagal@pbcgov.org

**DeBorah Posey-Blocker, Gov. Affairs Mgr.**  
(561) 841-4245 | DPoseyBlocker@pbcgov.org





**City of Delray Beach**  
**Budget Worksheet Report**  
**Dues and Subscriptions**  
**Fiscal Year 2022-23**

<b>G/L Account Number</b>	<b>Account Description</b>	<b>Transaction</b>	<b>Total Amount</b>
<b>Fund: 001 - General Fund</b>			
<b>EXPENSES</b>			
<b>Department: 11 - City Commission</b>			
<b>Division: 000 - Administration</b>			
001-11-000-511.54-11	Books Pubs Subs & Memberships Subscriptions	Florida League of Cities Subscription	90.00
001-11-000-511.54-13	Books Pubs Subs & Memberships Memberships	ASSOCIATION OF LOCAL GOV AUDITORS	140.00
001-11-000-511.54-13	Books Pubs Subs & Memberships Memberships	Business Development Board Membership	2,200.00
001-11-000-511.54-13	Books Pubs Subs & Memberships Memberships	FI League of Cities; Lobbies for City, Provides Legislation	10,110.00
001-11-000-511.54-13	Books Pubs Subs & Memberships Memberships	National League of Cities Membership	5,820.00
001-11-000-511.54-13	Books Pubs Subs & Memberships Memberships	Palm Beach County League of Cities Membership	15,935.00
001-11-000-511.54-13	Books Pubs Subs & Memberships Memberships	US Conference of Mayors	5,270.00
<b>Division Total: 000 - Administration</b>			<b>39,565.00</b>
<b>Department Total: 11 - City Commission</b>			<b>\$ 39,565.00</b>
<b>Department: 12 - City Manager</b>			
<b>Division: 000 - Administration</b>			
001-12-000-512.54-13	Books Pubs Subs & Memberships Memberships	FCCMA, Kiwanis Club of Delray, Nat. Civic League	6,265.00
001-12-000-512.54-13	Books Pubs Subs & Memberships Memberships	FGFOA	50.00
001-12-000-512.54-13	Books Pubs Subs & Memberships Memberships	Florida City County and Managment	569.00
001-12-000-512.54-13	Books Pubs Subs & Memberships Memberships	Greater Delray Beach Chamber	30.00
001-12-000-512.54-13	Books Pubs Subs & Memberships Memberships	ICMA	2,800.00
001-12-000-512.54-13	Books Pubs Subs & Memberships Memberships	ICMA	200.00
001-12-000-512.54-13	Books Pubs Subs & Memberships Memberships	PBCCMA	80.00
<b>Division Total: 000 - Administration</b>			<b>9,994.00</b>
<b>Division: 010 - Communications</b>			
001-12-010-512.54-13	Books Pubs Subs & Memberships Memberships	City-County Communications/Marketing Association	400.00
<b>Division Total: 010 - Communications</b>			<b>400.00</b>
<b>Division: 060 - Economic Development</b>			
001-12-060-559.54-13	Books Pubs Subs & Memberships Memberships	FEDC	600.00
001-12-060-559.54-13	Books Pubs Subs & Memberships Memberships	IEDC	455.00
<b>Division Total: 060 - Economic Development</b>			<b>1,055.00</b>
<b>Division: 070 - Sustainability / Resilience</b>			
001-12-070-513.54-13	Books Pubs Subs & Memberships Memberships	FEDC and IEDC memberships	1,175.00
001-12-070-513.54-13	Books Pubs Subs & Memberships Memberships	FL Green Building Coalition Membership	225.00
001-12-070-513.54-13	Books Pubs Subs & Memberships Memberships	ICLEI Annual Membership	1,200.00
001-12-070-513.54-13	Books Pubs Subs & Memberships Memberships	Resiliency Florida	2,000.00
001-12-070-513.54-13	Books Pubs Subs & Memberships Memberships	Urban Sustainability Director's Network	2,000.00
001-12-070-513.54-13	Books Pubs Subs & Memberships Memberships	US Green Building Council National	450.00
<b>Division Total: 070 - Sustainability / Resilience</b>			<b>7,050.00</b>
<b>Department Total: 12 - City Manager</b>			<b>\$ 18,499.00</b>
<b>Department: 13 - Finance</b>			
<b>Division: 000 - Administration</b>			
001-13-000-513.54-13	Books Pubs Subs & Memberships Memberships	AGA Membership	130.00
001-13-000-513.54-13	Books Pubs Subs & Memberships Memberships	AICPA (AFD, FD)	1,600.00
001-13-000-513.54-13	Books Pubs Subs & Memberships Memberships	American Payroll Association (Payroll Admin & PT Payroll Admin)	524.00
001-13-000-513.54-13	Books Pubs Subs & Memberships Memberships	FGFOA (FD, AFD, Acct Mgr, 5 Acct, CAO)	450.00
001-13-000-513.54-13	Books Pubs Subs & Memberships Memberships	GFOA (Base Rate + 3 Individual)	1,045.00
001-13-000-513.54-13	Books Pubs Subs & Memberships Memberships	Other	1,000.00
001-13-000-513.54-13	Books Pubs Subs & Memberships Memberships	PBC FGFOA (FD, AFD, Acct Mgr, 5 Acct, CAO)	270.00
001-13-000-513.54-13	Books Pubs Subs & Memberships Memberships	SFGFOA Local Chapter (AFD, Budget Manager)	50.00
<b>Division Total: 000 - Administration</b>			<b>5,069.00</b>
<b>Division: 019 - Purchasing</b>			
001-13-019-513.54-13	Books Pubs Subs & Memberships Memberships	FAPPO MEMBERSHIP - 6 STAFF MEMBERS	275.00
001-13-019-513.54-13	Books Pubs Subs & Memberships Memberships	NIGP MEMBERSHIP - AGENCY 6 MEMBERS	640.00
001-13-019-513.54-13	Books Pubs Subs & Memberships Memberships	SE CHAPTER NIGP MEMBERSHIP	300.00
<b>Division Total: 019 - Purchasing</b>			<b>1,215.00</b>
<b>Department Total: 13 - Finance</b>			<b>\$ 6,284.00</b>

Dues and Subscriptions  
Fiscal Year 2022-23

G/L Account Number	Account Description	Transaction	Total Amount
<b>Department: 14 - City Attorney</b>			
<b>Division: 000 - Administration</b>			
<b>Activity: 514 - Legal Counsel</b>			
<i>30 - Operating Expenditures/Expenses</i>			
001-14-000-514.54-13	Books Pubs Subs & Memberships Memberships		
001-14-000-514.54-13	Books Pubs Subs & Memberships Memberships	Florida Bar Dues	1,100.00
001-14-000-514.54-13	Books Pubs Subs & Memberships Memberships	Palm Beach County Bar Dues	300.00
<i>Account Classification Total: 30 - Operating Expenditures/Expenses</i>			
<b>Activity Total: 514 - Legal Counsel</b>			
<b>Division Total: 000 - Administration</b>			<b>1,400.00</b>
<b>Department Total: 14 - City Attorney</b>			<b>\$ 1,400.00</b>
<b>Department: 15 - City Clerk</b>			
<b>Division: 000 - Administration</b>			
001-15-000-512.54-13	Books Pubs Subs & Memberships Memberships	FLORIDA ASSOCIATION OF CITY CLERKS MEMBERSHIP	250.00
001-15-000-512.54-13	Books Pubs Subs & Memberships Memberships	ICRM RECORDS MANAGEMENT MEMBERSHIP	200.00
001-15-000-512.54-13	Books Pubs Subs & Memberships Memberships	INT. INSTITUTE OF MUNICIPAL CLERK (IIMC) MEMBERSHIP	330.00
001-15-000-512.54-13	Books Pubs Subs & Memberships Memberships	NOTARY RENEWALS	300.00
001-15-000-512.54-13	Books Pubs Subs & Memberships Memberships	PALM BEACH CITY CLERKS ASSOCIATION MEMBERSHIP	90.00
<b>Division Total: 000 - Administration</b>			<b>1,170.00</b>
<b>Department Total: 15 - City Clerk</b>			<b>\$ 1,170.00</b>
<b>Department: 17 - Human Resource</b>			
<b>Division: 000 - Administration</b>			
001-17-000-513.54-10	Books Pubs Subs & Memberships Books & Publications	CONSTITUTION BOOKS ORIENTATION	100.00
001-17-000-513.54-10	Books Pubs Subs & Memberships Books & Publications	LEADERSHIP BOOKS FOR HR CLASSES	100.00
001-17-000-513.54-13	Books Pubs Subs & Memberships Memberships	FPELRA - DEPARTMENT	225.00
001-17-000-513.54-13	Books Pubs Subs & Memberships Memberships	FPHRA - DEPARTMENT	135.00
001-17-000-513.54-13	Books Pubs Subs & Memberships Memberships	HRPBC	60.00
001-17-000-513.54-13	Books Pubs Subs & Memberships Memberships	IPMA - DEPARTMENT	400.00
001-17-000-513.54-13	Books Pubs Subs & Memberships Memberships	SHRM	1,380.00
<b>Division Total: 000 - Administration</b>			<b>2,400.00</b>
<b>Department Total: 17 - Human Resource</b>			<b>\$ 2,400.00</b>
<b>Department: 21 - Police</b>			
<b>Division: 110 - Support Bureau</b>			
001-21-110-521.54-10	Books Pubs Subs & Memberships Books & Publications	ADMIN/Various books/Law Enforcement Mental Health Grant	1,000.00
001-21-110-521.54-10	Books Pubs Subs & Memberships Books & Publications	SUPPORT MGMT/PERF PUBLICATION COMMAND STAFF	500.00
001-21-110-521.54-10	Books Pubs Subs & Memberships Books & Publications	SUPPORT MGMT/PERF PUBLICATION ON POLICE TOPICS	90.00
001-21-110-521.54-10	Books Pubs Subs & Memberships Books & Publications	TRAINING UNIT/BOOKS FOR ANNUAL PROMOTIONAL EXAMS	1,500.00
001-21-110-521.54-13	Books Pubs Subs & Memberships Memberships	ACCREDITATION UNIT/COMMISSION F/FL LAW ENFORCEMENT ACCREDITATION	900.00
001-21-110-521.54-13	Books Pubs Subs & Memberships Memberships	ACCREDITATION UNIT/FLA-PAC	200.00
001-21-110-521.54-13	Books Pubs Subs & Memberships Memberships	ACCREDITATION UNIT/IALEP	80.00
001-21-110-521.54-13	Books Pubs Subs & Memberships Memberships	ADMIN UNIT/NOTARY RENEWAL	250.00
001-21-110-521.54-13	Books Pubs Subs & Memberships Memberships	COMMO/APCO-NENA MEMBERSHIP - COMMUNICATIONS MANAGERS	100.00
001-21-110-521.54-13	Books Pubs Subs & Memberships Memberships	EXPLORERS/Annual Post Recharter W/ Gulf Stream Council - BSA	2,000.00
001-21-110-521.54-13	Books Pubs Subs & Memberships Memberships	FACILITY/CHAPLAINS/ICPC MEMBERSHIP	1,125.00
001-21-110-521.54-13	Books Pubs Subs & Memberships Memberships	FACILITY/NOTARY RENEWAL	90.00
001-21-110-521.54-13	Books Pubs Subs & Memberships Memberships	INTERNAL AFFAIRS/FL INTERNAL AFFAIRS INVESTIGATORS ASSOC	300.00
001-21-110-521.54-13	Books Pubs Subs & Memberships Memberships	INTERNAL AFFAIRS/NATIONAL INTERNAL AFFAIRS INVESTIG. ASSOC.	100.00
001-21-110-521.54-13	Books Pubs Subs & Memberships Memberships	INTERNAL AFFAIRS/NOBLE ANNUAL DUES	90.00
001-21-110-521.54-13	Books Pubs Subs & Memberships Memberships	INVESTIGATIONS/AMERICAN POLYGRAPH ASSOCIATION	300.00
001-21-110-521.54-13	Books Pubs Subs & Memberships Memberships	INVESTIGATIONS/FLORIDA POLYGRAPH ASSOCIATION	200.00
001-21-110-521.54-13	Books Pubs Subs & Memberships Memberships	PINS UNIT/NEW NOTARY LICENSES	350.00
001-21-110-521.54-13	Books Pubs Subs & Memberships Memberships	PINS UNIT/NOTARY RENEWAL	540.00
001-21-110-521.54-13	Books Pubs Subs & Memberships Memberships	PIO UNIT/PBC PUBLIC INFORMATION OFFICER ASSOCIATION	80.00
001-21-110-521.54-13	Books Pubs Subs & Memberships Memberships	SERVICE POPULATION ADVOCATE/ LICENSED MENTAL HEALTH COUNSELOR	240.00
001-21-110-521.54-13	Books Pubs Subs & Memberships Memberships	SERVICE POPULATION ADVOCATE/ MASTER CERTIFIED ADDICTION COUNSELOR	350.00
001-21-110-521.54-13	Books Pubs Subs & Memberships Memberships	SERVICE POPULATION ADVOCATE/ NATIONAL CERTIFIED COUNSELOR	170.00
001-21-110-521.54-13	Books Pubs Subs & Memberships Memberships	SERVICE POPULATION ADVOCATE/ PROFESSIONAL LIABILITY POLICY	298.00
001-21-110-521.54-13	Books Pubs Subs & Memberships Memberships	SERVICE POPULATION ADVOCATE/BAKER ACT TASK FORCE	100.00
001-21-110-521.54-13	Books Pubs Subs & Memberships Memberships	SERVICE POPULATION ADVOCATE/DRUG TASK FORCE	100.00

Dues and Subscriptions  
Fiscal Year 2022-23

G/L Account Number	Account Description	Transaction	Total Amount
001-21-110-521.54-13	Books Pubs Subs & Memberships Memberships	SERVICE POPULATION ADVOCATE/HEROIN TASK FORCE	100.00
001-21-110-521.54-13	Books Pubs Subs & Memberships Memberships	SERVICE POPULATION ADVOCATE/HOMELESS INITIATIVE TASK FORCE	100.00
001-21-110-521.54-13	Books Pubs Subs & Memberships Memberships	SERVICE POPULATION ADVOCATE/SOBER HOMES	100.00
001-21-110-521.54-13	Books Pubs Subs & Memberships Memberships	SPECIAL OPS/FLORIDA POLICE CHIEF ASSOCIATION	160.00
001-21-110-521.54-13	Books Pubs Subs & Memberships Memberships	SPECIAL OPS/IACP	150.00
001-21-110-521.54-13	Books Pubs Subs & Memberships Memberships	SPECIAL OPS/PALM BEACH COUNTY CHIEFS OF POLICE ASSN	200.00
001-21-110-521.54-13	Books Pubs Subs & Memberships Memberships	SUPPORT MGMT./PALM BEACH COUNTY CHIEFS ASSOCIATION	200.00
001-21-110-521.54-13	Books Pubs Subs & Memberships Memberships	SUPPORT MGMT/ASSISTANT CHIEF/FBI LEEDA	70.00
001-21-110-521.54-13	Books Pubs Subs & Memberships Memberships	SUPPORT MGMT/ASSISTANT CHIEF/FBI NATIONAL ACADEMY ASSOCIATION	70.00
001-21-110-521.54-13	Books Pubs Subs & Memberships Memberships	SUPPORT MGMT/ASSISTANT CHIEF/FLORIDA POLICE CHIEFS	30.00
001-21-110-521.54-13	Books Pubs Subs & Memberships Memberships	SUPPORT MGMT/ASSISTANT CHIEF/IACP	100.00
001-21-110-521.54-13	Books Pubs Subs & Memberships Memberships	SUPPORT MGMT/ASSISTANT CHIEF/PERF	330.00
001-21-110-521.54-13	Books Pubs Subs & Memberships Memberships	SUPPORT MGMT/FBI LEEDA	70.00
001-21-110-521.54-13	Books Pubs Subs & Memberships Memberships	SUPPORT MGMT/FBI NATIONAL ACADEMY ASSOCIATION	70.00
001-21-110-521.54-13	Books Pubs Subs & Memberships Memberships	SUPPORT MGMT/FLORIDA POLICE CHIEFS ASSOCIATION	50.00
001-21-110-521.54-13	Books Pubs Subs & Memberships Memberships	SUPPORT MGMT/IACP	100.00
001-21-110-521.54-13	Books Pubs Subs & Memberships Memberships	SUPPORT MGMT/KIWANIS	210.00
001-21-110-521.54-13	Books Pubs Subs & Memberships Memberships	SUPPORT MGMT/PBC POLICE CHIEFS ASSOCIATION	500.00
001-21-110-521.54-13	Books Pubs Subs & Memberships Memberships	SUPPORT MGMT/PERF	330.00
001-21-110-521.54-13	Books Pubs Subs & Memberships Memberships	TRAINING UNIT/INTL ASSN F/LAW ENFORCEMENT FIREARM INSTRUCTOR	400.00
001-21-110-521.54-13	Books Pubs Subs & Memberships Memberships	TRAINING UNIT/INTL LAW ENFORCEMENT TRAINERS ASSOCIATION	400.00
001-21-110-521.54-13	Books Pubs Subs & Memberships Memberships	TRAINING UNIT/RAPE AGGRESSION DEFENSE (RAD)	300.00
<b>Division Total: 110 - Support Bureau</b>			<b>15,093.00</b>
Division: 150 - Operations			
001-21-150-521.54-13	Books Pubs Subs & Memberships Memberships	CIU/ANNUAL REGIONAL ORGANIZED CRIME INFO CENTER	300.00
001-21-150-521.54-13	Books Pubs Subs & Memberships Memberships	CIU/FBI LEEDA MEMBERSHIP	50.00
001-21-150-521.54-13	Books Pubs Subs & Memberships Memberships	CIU/FCIA/IACA	160.00
001-21-150-521.54-13	Books Pubs Subs & Memberships Memberships	CIU/FGIA MEMBERSHIP	100.00
001-21-150-521.54-13	Books Pubs Subs & Memberships Memberships	CIU/FL ASSN OF CRIME ANALYSTS MEMBERSHIP	50.00
001-21-150-521.54-13	Books Pubs Subs & Memberships Memberships	CIU/FL INTELLIGENCE UNIT MEMBERESHIP	200.00
001-21-150-521.54-13	Books Pubs Subs & Memberships Memberships	CIU/IALEIA MEMBERSHIP FOR CRIME ANALYSTS	120.00
001-21-150-521.54-13	Books Pubs Subs & Memberships Memberships	CIU/NABI MEMBERSHIP	60.00
001-21-150-521.54-13	Books Pubs Subs & Memberships Memberships	CIU/REGIONAL ORGANIZED CRIME INFO CENTER (ANNUAL)	300.00
001-21-150-521.54-13	Books Pubs Subs & Memberships Memberships	COMM PATROL/FLORIDA POLICE CHIEF'S ASSN	250.00
001-21-150-521.54-13	Books Pubs Subs & Memberships Memberships	COMM PATROL/IACP MEMBERSHIP	250.00
001-21-150-521.54-13	Books Pubs Subs & Memberships Memberships	COMM PATROL/PB POLICE CHIEF'S ASSN, CAPTAIN (ANNUAL)	200.00
001-21-150-521.54-13	Books Pubs Subs & Memberships Memberships	COMM PATROL/POLICE EXECUTIVE RESEARCH FORUM- CAPT.	400.00
001-21-150-521.54-13	Books Pubs Subs & Memberships Memberships	COP/NATIONAL ORGANIZATION OF BLACK LAW ENFORCEMENT	85.00
001-21-150-521.54-13	Books Pubs Subs & Memberships Memberships	CSI/FLORIDA DIVISION OF THE INTNL ASSN FOR IDENTIFICATION	245.00
001-21-150-521.54-13	Books Pubs Subs & Memberships Memberships	CSI/GOLD COAST FORENSICS ASSN	105.00
001-21-150-521.54-13	Books Pubs Subs & Memberships Memberships	CSI/INTERNATIONAL ASSN FOR IDENTIFICATION	560.00
001-21-150-521.54-13	Books Pubs Subs & Memberships Memberships	EVIDENCE/INTERNATIONAL ASSN FOR PROPERTY AND EVIDENCE	150.00
001-21-150-521.54-13	Books Pubs Subs & Memberships Memberships	FLORIDA ASSN HOSTAGE NEGOTIATORS	300.00
001-21-150-521.54-13	Books Pubs Subs & Memberships Memberships	INVESTIGATIONS/AMERICAN ASSN. OF POLICE POLYGRAPHERS	300.00
001-21-150-521.54-13	Books Pubs Subs & Memberships Memberships	INVESTIGATIONS/FBI LEEDA	100.00
001-21-150-521.54-13	Books Pubs Subs & Memberships Memberships	INVESTIGATIONS/FLORIDA POLICE CHIEF'S ASSN. CAPT.	250.00
001-21-150-521.54-13	Books Pubs Subs & Memberships Memberships	INVESTIGATIONS/FLORIDA POLYGRAPH ASSN	276.00
001-21-150-521.54-13	Books Pubs Subs & Memberships Memberships	INVESTIGATIONS/IACP MEMBERSHIP	250.00
001-21-150-521.54-13	Books Pubs Subs & Memberships Memberships	INVESTIGATIONS/PB POLICE CHIEF'S ASSN. CAPT.	200.00
001-21-150-521.54-13	Books Pubs Subs & Memberships Memberships	INVESTIGATIONS/POLICE EXECUTIVE RESEARCH FORUM CAPT.	200.00
001-21-150-521.54-13	Books Pubs Subs & Memberships Memberships	INVESTIGATIONS/SPI ALUMNI	100.00
001-21-150-521.54-13	Books Pubs Subs & Memberships Memberships	K9/FLEKA ANNUAL RECERTIFICATION	500.00
001-21-150-521.54-13	Books Pubs Subs & Memberships Memberships	OPS MGMT/A/C ROTARY CLUB	500.00
001-21-150-521.54-13	Books Pubs Subs & Memberships Memberships	OPS MGMT/FL POLICE CHIEF'S ASSOC.	250.00
001-21-150-521.54-13	Books Pubs Subs & Memberships Memberships	OPS MGMT/IACP MEMBERSHIP	250.00
001-21-150-521.54-13	Books Pubs Subs & Memberships Memberships	OPS MGMT/POLICE EXECUTIVE RESEARCH FORUM	200.00
001-21-150-521.54-13	Books Pubs Subs & Memberships Memberships	SPI ALUMNI	60.00
001-21-150-521.54-13	Books Pubs Subs & Memberships Memberships	SWAT/FLORIDA SWAT ASSN TEAM MEMBERSHIP	500.00
001-21-150-521.54-13	Books Pubs Subs & Memberships Memberships	SWAT/NATIONAL TACTICAL OFFC.ASSO. TEAM MEMEBRSHIP	200.00
001-21-150-521.54-13	Books Pubs Subs & Memberships Memberships	VIN/FNOA MEMBERSHIP	350.00
<b>Division Total: 150 - Operations</b>			<b>8,371.00</b>
<b>Department Total: 21 - Police</b>			<b>\$ 23,464.00</b>

Dues and Subscriptions  
Fiscal Year 2022-23

G/L Account Number	Account Description	Transaction	Total Amount
<b>Department: 22 - Fire</b>			
<b>Division: 000 - Administration</b>			
001-22-000-522.54-13	Books Pubs Subs & Memberships Memberships	Civic Club Membership - Fire Chief	300.00
001-22-000-522.54-13	Books Pubs Subs & Memberships Memberships	CPSE - Annual Registration	1,825.00
001-22-000-522.54-13	Books Pubs Subs & Memberships Memberships	EMS Providers Assicaion of PBC	80.00
001-22-000-522.54-13	Books Pubs Subs & Memberships Memberships	Florida Fire Chief's Association Membership - 12 Members	2,064.00
001-22-000-522.54-13	Books Pubs Subs & Memberships Memberships	International Association of Fire Chiefs - 12 Members	2,880.00
001-22-000-522.54-13	Books Pubs Subs & Memberships Memberships	Leadership Delray	1,600.00
001-22-000-522.54-13	Books Pubs Subs & Memberships Memberships	National Fire Protection	175.00
001-22-000-522.54-13	Books Pubs Subs & Memberships Memberships	Palm Beach County Fire Chief's Association - 18 Members	930.00
<b>Division Total: 000 - Administration</b>			<b>9,854.00</b>
<b>Division: 150 - Operations</b>			
001-22-150-526.54-13	Books Pubs Subs & Memberships Memberships	Boy Scouts of America-registration/participation fee-18 ppl	850.00
001-22-150-526.54-13	Books Pubs Subs & Memberships Memberships	Florida Fire Chiefs Association Fire-Rescue Cadets	345.00
001-22-150-526.54-13	Books Pubs Subs & Memberships Memberships	International Association of Dive Rescue Specialist-40 ppl	816.00
001-22-150-526.54-13	Books Pubs Subs & Memberships Memberships	PBC Training Officer's Association -10 ppl	1,000.00
<b>Division Total: 150 - Operations</b>			<b>3,011.00</b>
<b>Division: 160 - Emergency Management</b>			
001-22-160-525.54-13	Books Pubs Subs & Memberships Memberships	International Association of Emergency Mgrs.	195.00
<b>Division Total: 160 - Emergency Management</b>			<b>195.00</b>
<b>Division: 170 - Safety</b>			
001-22-170-522.54-13	Books Pubs Subs & Memberships Memberships	Florida Fire & Life Safety Educators (FFLSE)	70.00
001-22-170-522.54-13	Books Pubs Subs & Memberships Memberships	Florida Fire Marshal's & Inspector's Association	585.00
001-22-170-522.54-13	Books Pubs Subs & Memberships Memberships	NFPA - Div. Chief	180.00
001-22-170-522.54-13	Books Pubs Subs & Memberships Memberships	Palm Beach County Fire Marshal's Association	135.00
<b>Division Total: 170 - Safety</b>			<b>970.00</b>
<b>Division: 180 - Ocean Rescue &amp; Beach Oper</b>			
001-22-180-522.54-10	Books Pubs Subs & Memberships Books & Publications	USLA Open Water Lifesaving Manual	210.00
001-22-180-522.54-13	Books Pubs Subs & Memberships Memberships	FBPCA Association Membership	75.00
001-22-180-522.54-13	Books Pubs Subs & Memberships Memberships	Florida Beach Patrol Chiefs Association	125.00
001-22-180-522.54-13	Books Pubs Subs & Memberships Memberships	USLA Annual Membership	570.00
<b>Division Total: 180 - Ocean Rescue &amp; Beach Oper</b>			<b>980.00</b>
<b>Department Total: 22 - Fire</b>			<b>\$ 15,010.00</b>
<b>Department: 24 - Neighborhood and Community Svcs</b>			
<b>Division: 240 - Code Enforcement</b>			
001-24-240-524.54-13	Books Pubs Subs & Memberships Memberships	FL Assoc. of Business Tax Officials	400.00
001-24-240-524.54-13	Books Pubs Subs & Memberships Memberships	FI Assoc. of Code Enforcement (FACE)	850.00
001-24-240-524.54-13	Books Pubs Subs & Memberships Memberships	PBC Code Enforcement Association	450.00
<b>Division Total: 240 - Code Enforcement</b>			<b>1,700.00</b>
<b>Department Total: 24 - Neighborhood and Community Svcs</b>			<b>\$ 1,700.00</b>
<b>Department: 26 - Development Services</b>			
<b>Division: 200 - Planning</b>			
001-26-200-515.54-13	Books Pubs Subs & Memberships Memberships	Planning Certifications (AICP, LEED, etc.)	6,000.00
<b>Division Total: 200 - Planning</b>			<b>6,000.00</b>
<b>Department Total: 26 - Development Services</b>			<b>\$ 6,000.00</b>
<b>Department: 41 - Public Works</b>			
<b>Division: 000 - Administration</b>			
001-41-000-534.54-13	Books Pubs Subs & Memberships Memberships	APWA Membership	1,900.00
<b>Activity Total: 534 - Garbage / Solid Waste Control</b>			<b>1,900.00</b>
<b>Division Total: 000 - Administration</b>			<b>1,900.00</b>
<b>Division: 350 - Building Maintenance</b>			
001-41-350-519.54-13	Books Pubs Subs & Memberships Memberships	License renewals	240.00
<b>Division Total: 350 - Building Maintenance</b>			<b>240.00</b>
<b>Department Total: 41 - Public Works</b>			<b>\$ 2,140.00</b>
<b>Department: 72 - Parks &amp; Recreation</b>			
<b>Division: 000 - Administration</b>			
001-72-000-572.54-13	Books Pubs Subs & Memberships Memberships	FRPA MEMBERSHIP	1,074.00
001-72-000-572.54-13	Books Pubs Subs & Memberships Memberships	NRPA AGENCY MENBERSHIP - INCLUDES DIRECTOR/ASSIST DIR	875.00
<b>Division Total: 000 - Administration</b>			<b>1,949.00</b>

Dues and Subscriptions  
Fiscal Year 2022-23

	<b>G/L Account Number</b>	<b>Account Description</b>	<b>Transaction</b>	<b>Total Amount</b>
Division:	720 - Aquatics Operations			
	001-72-720-572.54-10	Books Pubs Subs & Memberships Books & Publications	AMERICAN RED CROSS EDUCATIONAL AND TRAINING MATERIALS	500.00
	001-72-720-572.54-10	Books Pubs Subs & Memberships Books & Publications	AMERICAN RED CROSS SKILL CARDS FOR REQUIRED	500.00
	001-72-720-572.54-13	Books Pubs Subs & Memberships Memberships	FRPA MEMBERSHIP	600.00
	001-72-720-572.54-13	Books Pubs Subs & Memberships Memberships	PADI SCUBA SITE/INSTRUCTOR MEMBERSHIP	350.00
		<b>Division Total: 720 - Aquatics Operations</b>		<b>1,950.00</b>
Division:	731 - Out of School			
	001-72-731-572.54-13	Books Pubs Subs & Memberships Memberships	FLORIDA AFTERSCHOOL ALLIANCE MEMBERSHIP FEE	50.00
	001-72-731-572.54-13	Books Pubs Subs & Memberships Memberships	MEMBERSHIP FOR CUB SCOUTS & INS	800.00
	001-72-731-572.54-13	Books Pubs Subs & Memberships Memberships	NATIONAL AFTERSCHOOL ASSOCIATION MEMBERSHIP FEE	160.00
	001-72-731-572.54-13	Books Pubs Subs & Memberships Memberships	REQUIREMENT FOR CUB SCOUT COMMITTEE	200.00
		<b>Division Total: 731 - Out of School</b>		<b>1,210.00</b>
Division:	732 - Teen Center			
	001-72-732-572.54-13	Books Pubs Subs & Memberships Memberships	ARCHERY MEMBERSHIPS	700.00
	001-72-732-572.54-13	Books Pubs Subs & Memberships Memberships	FRPA REGISTRATION (FUNDS MOVED FROM 54-30)	700.00
		<b>Division Total: 732 - Teen Center</b>		<b>1,400.00</b>
Division:	733 - Athletics			
	001-72-733-572.54-13	Books Pubs Subs & Memberships Memberships	ADDITIONAL MEMBERSHIPS FOR SUPERVISOR I & III	200.00
	001-72-733-572.54-13	Books Pubs Subs & Memberships Memberships	FRPA MEMBERSHIP	250.00
		<b>Division Total: 733 - Athletics</b>		<b>450.00</b>
Division:	734 - Community Center			
	001-72-734-572.54-13	Books Pubs Subs & Memberships Memberships	FRPA ANNUAL MEMBERSHIP	200.00
		<b>Division Total: 734 - Community Center</b>		<b>200.00</b>
Division:	735 - Veterans Park			
	001-72-735-572.54-13	Books Pubs Subs & Memberships Memberships	FRPA ANNUAL MEMBERSHIP (RECREATION SUPERVISOR III)	160.00
	001-72-735-572.54-13	Books Pubs Subs & Memberships Memberships	NRPA MEMBERSHIP	200.00
		<b>Division Total: 735 - Veterans Park</b>		<b>360.00</b>
Division:	736 - Pompey Park			
	001-72-736-572.54-13	Books Pubs Subs & Memberships Memberships	FRPA MEMBERSHIP FOR STAFF	600.00
	001-72-736-572.54-13	Books Pubs Subs & Memberships Memberships	MEMBERSHIP FOR TRACK TEAM	400.00
		<b>Division Total: 736 - Pompey Park</b>		<b>1,000.00</b>
Division:	737 - Catherine Strong			
	001-72-737-572.54-13	Books Pubs Subs & Memberships Memberships	ANNUAL FRPA MEMBERSHIP	300.00
		<b>Division Total: 737 - Catherine Strong</b>		<b>300.00</b>
Division:	738 - Parks Maintenance			
	001-72-738-572.54-13	Books Pubs Subs & Memberships Memberships	FRPA, FLA Irrigation Society, Prof Grounds Maint Society	740.00
		<b>Division Total: 738 - Parks Maintenance</b>		<b>740.00</b>
		<b>Department Total: 72 - Parks &amp; Recreation</b>		<b>\$ 9,559.00</b>
Department:	74 - Special Events			
Division:	000 - Administration			
	001-74-000-574.54-13	Books Pubs Subs & Memberships Memberships	FLORIDA FESTIVAL & EVENT ASSOCIATION	450.00
	001-74-000-574.54-13	Books Pubs Subs & Memberships Memberships	INTERNATIONAL FESTIVAL AND EVENTS ASSOCIATION	560.00
		<b>Division Total: 000 - Administration</b>		<b>\$ 1,010.00</b>
		<b>Department Total: 74 - Special Events</b>		<b>\$ 1,010.00</b>
Department:	75 - Recreation Facilities			
Division:	770 - Tennis Centers			
	001-75-770-575.54-13	Books Pubs Subs & Memberships Memberships	CHAMBER OF COMMERCE MEMBERSHIP	400.00
	001-75-770-575.54-13	Books Pubs Subs & Memberships Memberships	USPTA MEMBERSHIP	2,000.00
	001-75-770-575.54-13	Books Pubs Subs & Memberships Memberships	USPTR MEMBERSHIP	400.00
		<b>Division Total: 770 - Tennis Centers</b>		<b>2,800.00</b>
		<b>Department Total: 75 - Recreation Facilities</b>		<b>\$ 2,800.00</b>
		<b>Fund Total: 001 - General Fund</b>		<b>\$ 131,001.00</b>

Dues and Subscriptions  
Fiscal Year 2022-23

G/L Account Number	Account Description	Transaction	Total Amount
<b>Fund: 118 - Neighborhood Services Fund</b>			
EXPENSES			
Department: 54 - Neighborhood Services			
Division: 511 - CDBG Program Plan/Admin	118-54-511-554.54-13	Books Pubs Subs & Memberships Memberships NCCA Membership	940.00
<b>Division Total: 511 - CDBG Program Plan/Admin</b>			<b>940.00</b>
Division: 540 - SHIP Program-State Grant	118-54-540-554.54-13	Books Pubs Subs & Memberships Memberships MEMBERSHIP FEE FOR FLORIDA HOUSING	200.00
<b>Division Total: 540 - SHIP Program-State Grant</b>			<b>200.00</b>
<b>Department Total: 54 - Neighborhood Services</b>			<b>\$ 1,140.00</b>
<b>Fund Total: 118 - Neighborhood Services Fund</b>			<b>\$ 1,140.00</b>
<b>Fund: 125 - Building Permit Fund</b>			
EXPENSES			
Department: 26 - Development Services			
Division: 220 - Building Inspection	125-26-220-524.54-10	Books Pubs Subs & Memberships Books & Publications CODE BOOKS AND COMMENTARY BOOKS FOR INSPECTORS	3,000.00
125-26-220-524.54-10	125-26-220-524.54-13	Books Pubs Subs & Memberships Books & Publications ICC PERMIT TECH CERTIFICATION BOOKS	1,000.00
125-26-220-524.54-13	125-26-220-524.54-13	Books Pubs Subs & Memberships Memberships BLDG. OFFICIALS ASSOCIATION OF FLORIDA - MEMBERSHIP	1,500.00
125-26-220-524.54-13	125-26-220-524.54-13	Books Pubs Subs & Memberships Memberships FLORIDA ASSOCIATION OF PLUMBING, GAS AND MECHANICAL INSP MEMBER	400.00
125-26-220-524.54-13	125-26-220-524.54-13	Books Pubs Subs & Memberships Memberships FLORIDA FLOODPLAIN MANAGERS - (3) MEMBERSHIPS	450.00
125-26-220-524.54-13	125-26-220-524.54-13	Books Pubs Subs & Memberships Memberships ICC PERMIT TECH CERTIFICATION (10) - BOAF	550.00
125-26-220-524.54-13	125-26-220-524.54-13	Books Pubs Subs & Memberships Memberships INTERNATIONAL ASSOCIATION OF ELECTRICAL INSP. - MEMBERSHIP	150.00
125-26-220-524.54-13	125-26-220-524.54-13	Books Pubs Subs & Memberships Memberships NATIONAL FIRE PROTECTION AGENCY - MEMBERSHIP	200.00
<b>Division Total: 220 - Building Inspection</b>			<b>7,250.00</b>
<b>Department Total: 26 - Development Services</b>			<b>\$ 7,250.00</b>
<b>Fund Total: 125 - Building Permit Fund</b>			<b>\$ 7,250.00</b>
<b>Fund: 441 - Water &amp; Sewer Fund</b>			
EXPENSES			
Department: 36 - Water & Sewer			
Division: 000 - Administration	441-36-000-536.54-13	Books Pubs Subs & Memberships Memberships American Waterworks Assoc (AWWA)	530.00
441-36-000-536.54-13	441-36-000-536.54-13	Books Pubs Subs & Memberships Memberships License renewals, PE, FL Dept of Business Regulations	200.00
<b>Division Total: 000 - Administration</b>			<b>730.00</b>
Division: 050 - Utilities Customer Serv.	441-36-050-536.54-13	Books Pubs Subs & Memberships Memberships AR MEMBERSHIPS	105.00
<b>Division Total: 050 - Utilities Customer Serv.</b>			<b>105.00</b>
Division: 250 - Laboratory	441-36-250-536.54-13	Books Pubs Subs & Memberships Memberships Industry water & chemical organizations, memberships for staff	700.00
<b>Division Total: 250 - Laboratory</b>			<b>700.00</b>
Division: 251 - Environmental Resources Compl.	441-36-251-536.54-10	Books Pubs Subs & Memberships Books & Publications AWWA Manuals & Standards	4,500.00
441-36-251-536.54-13	441-36-251-536.54-13	Books Pubs Subs & Memberships Memberships American Backflow Prevention	200.00
441-36-251-536.54-13	441-36-251-536.54-13	Books Pubs Subs & Memberships Memberships AWWA	550.00
441-36-251-536.54-13	441-36-251-536.54-13	Books Pubs Subs & Memberships Memberships IAPMO	250.00
441-36-251-536.54-13	441-36-251-536.54-13	Books Pubs Subs & Memberships Memberships SEFL Utility Council	500.00
<b>Division Total: 251 - Environmental Resources Compl.</b>			<b>6,000.00</b>
Division: 256 - Water Maintenance	441-36-256-536.54-10	Books Pubs Subs & Memberships Books & Publications National Electric code handbook 2021 edition	200.00
441-36-256-536.54-13	441-36-256-536.54-13	Books Pubs Subs & Memberships Memberships Membership subscriptions	100.00
<b>Division Total: 256 - Water Maintenance</b>			<b>300.00</b>
Division: 257 - Lift Station Maintenance	441-36-257-536.54-13	Books Pubs Subs & Memberships Memberships AWWA memberships	375.00
441-36-257-536.54-13	441-36-257-536.54-13	Books Pubs Subs & Memberships Memberships IEEE Electrician licenses	120.00
<b>Division Total: 257 - Lift Station Maintenance</b>			<b>495.00</b>
Division: 270 - Wastewater Collection	441-36-270-536.54-13	Books Pubs Subs & Memberships Memberships FW&PCOA membership	180.00
441-36-270-536.54-13	441-36-270-536.54-13	Books Pubs Subs & Memberships Memberships FW&PCOA membership	180.00
<b>Division Total: 270 - Wastewater Collection</b>			<b>180.00</b>

# Dues and Subscriptions

## Fiscal Year 2022-23

G/L Account Number	Account Description	Transaction	Total Amount
Division: 283 - Water Distribution			
441-36-283-536.54-13	Books Pubs Subs & Memberships Memberships	AWWA	600.00
441-36-283-536.54-13	Books Pubs Subs & Memberships Memberships	FW&PCOA	90.00
	<b>Division Total: 283 - Water Distribution</b>		<b>690.00</b>
Division: 362 - Engineering			
441-36-362-536.54-13	Books Pubs Subs & Memberships Memberships	GISP Certification Renewal & URISA Renewal	400.00
441-36-362-536.54-13	Books Pubs Subs & Memberships Memberships	Renewal of PE licenses (2)	1,000.00
	<b>Division Total: 362 - Engineering</b>		<b>1,400.00</b>
	<b>Department Total: 36 - Water &amp; Sewer</b>		<b>\$ 10,600.00</b>
	<b>Fund Total: 441 - Water &amp; Sewer Fund</b>		<b>\$ 10,600.00</b>
<b>Fund: 445 - DB Municipal Golf Course Fund</b>			
<b>EXPENSES</b>			
Department: 75 - Recreation Facilities			
Division: 151 - Pro Shop			
445-75-151-575.54-13	Books Pubs Subs & Memberships Memberships	PGA DUES x 3 - FLORIDA STATE GOLF ASSOC - USGA	1,700.00
	<b>Division Total: 151 - Pro Shop</b>		<b>1,700.00</b>
Division: 760 - Golf Course			
445-75-760-575.54-13	Books Pubs Subs & Memberships Memberships	AUDUBON	200.00
445-75-760-575.54-13	Books Pubs Subs & Memberships Memberships	CHAMBER OF COMMERCE - DELRAY BEACH GOLF CLUB	540.00
445-75-760-575.54-13	Books Pubs Subs & Memberships Memberships	PALM BEACH COUNTY CONVENTION VISITOR'S BUREAU	250.00
445-75-760-575.54-13	Books Pubs Subs & Memberships Memberships	SPORTS COMMISSION	400.00
	<b>Division Total: 760 - Golf Course</b>		<b>1,390.00</b>
	<b>Department Total: 75 - Recreation Facilities</b>		<b>\$ 3,090.00</b>
	<b>Fund Total: 445 - DB Municipal Golf Course Fund</b>		<b>\$ 3,090.00</b>
<b>Fund: 446 - Lakeview Golf Course Fund</b>			
<b>EXPENSES</b>			
Department: 75 - Recreation Facilities			
Division: 153 - Course Maintenance			
446-75-153-575.54-13	Books Pubs Subs & Memberships Memberships	AUDUBON	200.00
446-75-153-575.54-13	Books Pubs Subs & Memberships Memberships	GCSAA	370.00
446-75-153-575.54-13	Books Pubs Subs & Memberships Memberships	PBCGCSA	110.00
	<b>Division Total: 153 - Course Maintenance</b>		<b>680.00</b>
Division: 760 - Golf Course			
446-75-760-575.54-13	Books Pubs Subs & Memberships Memberships	CHAMBER	320.00
446-75-760-575.54-13	Books Pubs Subs & Memberships Memberships	FL STATE GOLF ASSOC	150.00
446-75-760-575.54-13	Books Pubs Subs & Memberships Memberships	PALM BEACH COUNTY CONVENTION	250.00
446-75-760-575.54-13	Books Pubs Subs & Memberships Memberships	USGA	110.00
	<b>Division Total: 760 - Golf Course</b>		<b>830.00</b>
	<b>Department Total: 75 - Recreation Facilities</b>		<b>\$ 1,510.00</b>
	<b>Fund Total: 446 - Lakeview Golf Course Fund</b>		<b>\$ 1,510.00</b>
<b>Fund: 501 - Garage Fund</b>			
<b>EXPENSES</b>			
Department: 43 - City Garage			
Division: 000 - Administration			
501-43-000-549.54-10	Books Pubs Subs & Memberships Books & Publications	Study/Training Materials: NFPA, EVT, ASE Certifications	500.00
501-43-000-549.54-13	Books Pubs Subs & Memberships Memberships	NAFA, FLAGFA, FFCA Memberships for 5 Employees	1,860.00
	<b>Division Total: 000 - Administration</b>		<b>2,360.00</b>
	<b>Department Total: 43 - City Garage</b>		<b>\$ 2,360.00</b>
	<b>Fund Total: 501 - Garage Fund</b>		<b>\$ 2,360.00</b>
<b>Fund: 551 - Insurance</b>			
<b>EXPENSES</b>			
Department: 13 - Finance			
Division: 030 - Risk			
551-13-030-513.54-13	Books Pubs Subs & Memberships Memberships	PRIMA Local	50.00
551-13-030-513.54-13	Books Pubs Subs & Memberships Memberships	PRIMA National	400.00
551-13-030-513.54-13	Books Pubs Subs & Memberships Memberships	RIMS	700.00
551-13-030-513.54-13	Books Pubs Subs & Memberships Memberships	Safety Counsel of PBC	150.00
	<b>Division Total: 030 - Risk</b>		<b>1,300.00</b>
	<b>Department Total: 13 - Finance</b>		<b>\$ 1,300.00</b>
	<b>Fund Total: 551 - Insurance</b>		<b>\$ 1,300.00</b>
	<b>GRAND TOTAL ALL FUNDS</b>		<b>\$ 158,251.00</b>

# January 9, 2023 - January 15, 2023

January 2023						
Su	Mo	Tu	We	Th	Fr	Sa
	1	2	3	4	5	6
7	8	9	10	11	12	13
14	15	16	17	18	19	20
21	22	23	24	25	26	27
28	29	30	31			

February 2023						
Su	Mo	Tu	We	Th	Fr	Sa
				1	2	3
4	5	6	7	8	9	10
11	12	13	14	15	16	17
18	19	20	21	22	23	24
25	26	27	28			

## Monday, January 9

- 7:30am - 8:30am Begin CIL (CM Office) ↻
- 8:30am - 9:00am Review PB/MB (CM Office)
- 9:00am - 10:00am Jeff Oris Annual Performance Evaluation (CM Office) - Terrence R. Moore
- 10:00am - 11:30am Mayor mtg w/CM Moore Re: Agenda & Updates (City Manager's Office) - Rangel, Delores ↻
- 10:00am - 10:30am Selection Process for Future Executive Assistant to Mayor and City Commissioners (City Manager's Office) -
- 11:30am - 12:30pm Texas A&M Transaction (Various)
- 2:00pm - 2:30pm Duane D'Andrea Bi-Weekly Meeting (CM's Office) ↻
- 3:00pm - 4:00pm Comm. Johnson mtg w/CM Moore & Hugh Dunkley RE: Follow-Up Analysis Regarding Lease Purchase
- 3:00pm - 4:30pm Canceled: Cancelled - Comm. Johnson mtg w/CM
- 4:00pm - 5:00pm Aloft Delray Beach Waiver Request (Conference)

## Tuesday, January 10

- Amanda ooo
- Katerri ooo
- 8:00am - 9:00am Compile ELT Meeting Agenda (CM Office) - Terrence R. Moore
- 9:00am - 10:00am Water Treatment Plant Operators Compensation Analysis (CM Office) - Terrence R. Moore
- 10:00am - 11:00am Direction Concerning Pompey Park Improvement Program Contractor Selection Process (CM Office) - Terrence R. Moore
- 11:30am - 12:30pm Compile Information Letter Report - Financial Summary of Membership for Dues, Association, Memberships, etc.
- 12:30pm - 1:30pm Various (Various)
- 3:15pm - 8:15pm January 10th Commission Meetings - Viewing of Presentations (Microsoft Teams Meeting) - Harris, Patrice

## Wednesday, January 11

- 7:30am - 8:30am Kiwanis Club of Delray Beach (Delray Beach Golf Club (2200 Highland Ave, Delray Beach, FL 33445)) - Ezra Krieg ↻
- 9:00am - 11:00am Executive Leadership Team Meeting (Conference Room - City Hall 1st Floor) - Vega, Brenda ↻
- 11:00am - 11:30am Kent Edwards Bi-Weekly Meeting (CM's Office) - Vega, Brenda ↻
- 12:00pm - 2:00pm Various (Various)
- 3:00pm - 3:30pm Hugh Dunkley Bi-Weekly Meeting (CM's Office) - Vega, Brenda ↻
- 4:00pm - 5:00pm Compile Information Letter Report -Palm Trail Bus Shelter Improvement Program (CM Office) - Terrence R. Moore

## Thursday, January 12

- 9:00am - 10:00am Compile Information Letter Report - Trajectory for Implementing Crest Theater Building Renovation Program (CM Office) - Terrence R. Moore
- 11:00am - 12:00pm Compile Information Letter Report -Current Trajectory for the Development and Construction of New Water Treatment Plant Facility (CM Office) - Terrence R. Moore
- 2:00pm - 3:00pm Comm. Casale Mtg w/CM Moore Re: Bi-Weekly Updates (City Manager's Office) - Rangel, Delores ↻
- 2:00pm - 2:30pm Deputy VM Casale mtg w/CM Moore, Hugh Dunkley & Missie Barletto Re: Follow-Up Analysis Regarding Lease
- 3:00pm - 4:30pm Various (Various) ↻
- 3:30pm - 4:30pm Monthly Meeting with Renee Jadusingh (CRA Office) - Vega, Brenda ↻
- 4:30pm - 5:30pm Biweekly Involving Office of the Chief of Police (CM Office) - Terrence R. Moore ↻

## Friday, January 13

- Amanda ooo
- Gina ooo
- 7:30am - 9:00am Finalize CIL (CM Office) ↻
- 9:00am - 9:30am Anthea Gianniotis Bi-Weekly Meeting (City Manager's Office) - Vega, Brenda ↻
- 10:00am - 10:30am Schedule Return (CM Office)
- 11:00am - 11:30am Howard Brown (ICMA) (Delray Beach City Hall Office of the City Manager) - Terrence R. Moore
- 3:00pm - 4:00pm Graduate Student Program Dialogue (CM Office/Variou)

## Saturday, January 14

- 10:00am - 11:00am Delray Beach Tennis Center (Hard Court #1) ↻
- 11:00am - 1:00pm Various, CIL Notes, etc. (CM Office) ↻
- 11:30am - 1:00pm Schedule Annual Performance Evaluations for 2023 (CM Office)

## Sunday, January 15